

BUYER'S MODEL NO. 1500

FACTORY MODEL CA10060

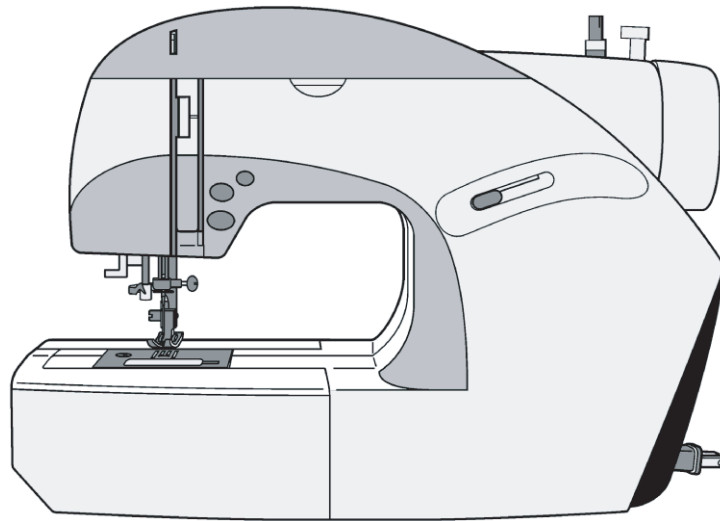
ORIGINAL ISSUE

September, 2000

SECTION —

REFER TO IMPORTANT NOTICE BELOW

PARTS LIST FOR Model 1500




SINGER

IMPORTANT:

WHEN ORDERING THE PARTS ALWAYS CHECK THE SERIAL NUMBER OF THE MACHINE.

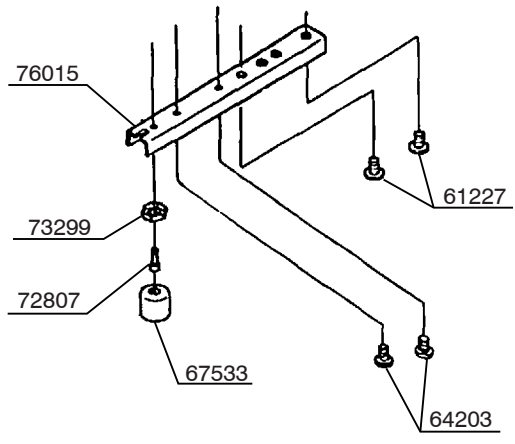
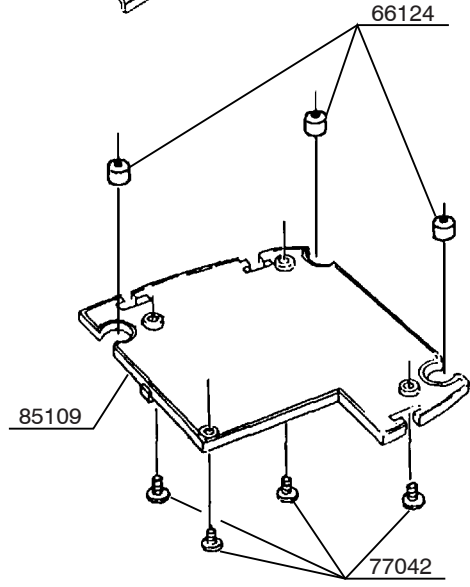
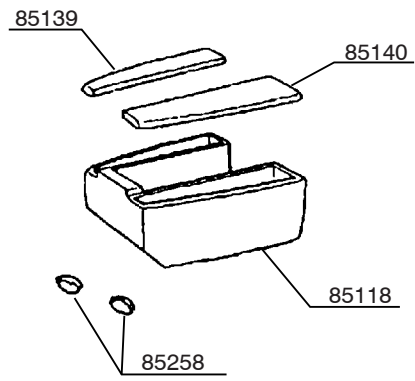
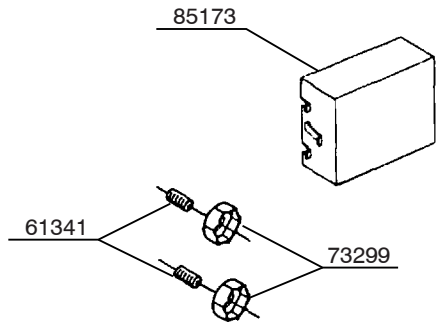
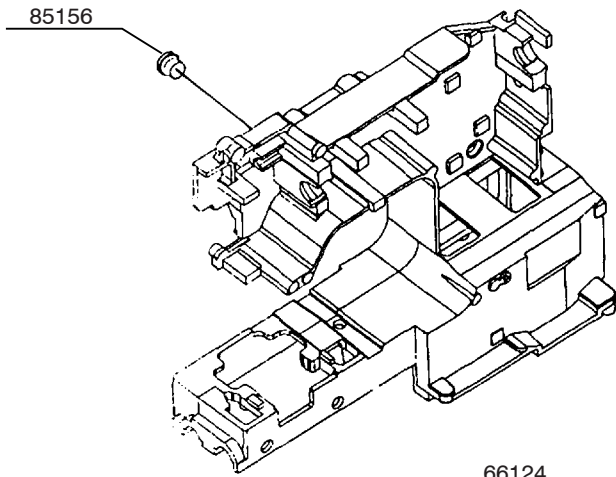
FIRST DIGIT OF THE SERIAL NUMBER MUST MATCH WITH THE LAST DIGIT OF THE FACTOR MODEL ABOVE.

SINGER SEWING CO. USA	
MODEL-MODELE 1500	SERIAL-NO. DE SÉRIE 0 x x x x x x x
 LISTED E485 E81486 SEWING MACHINE	120V AC 60Hz 0.6A

FIRST DIGIT

Look to the left of Diamond Needle Corp

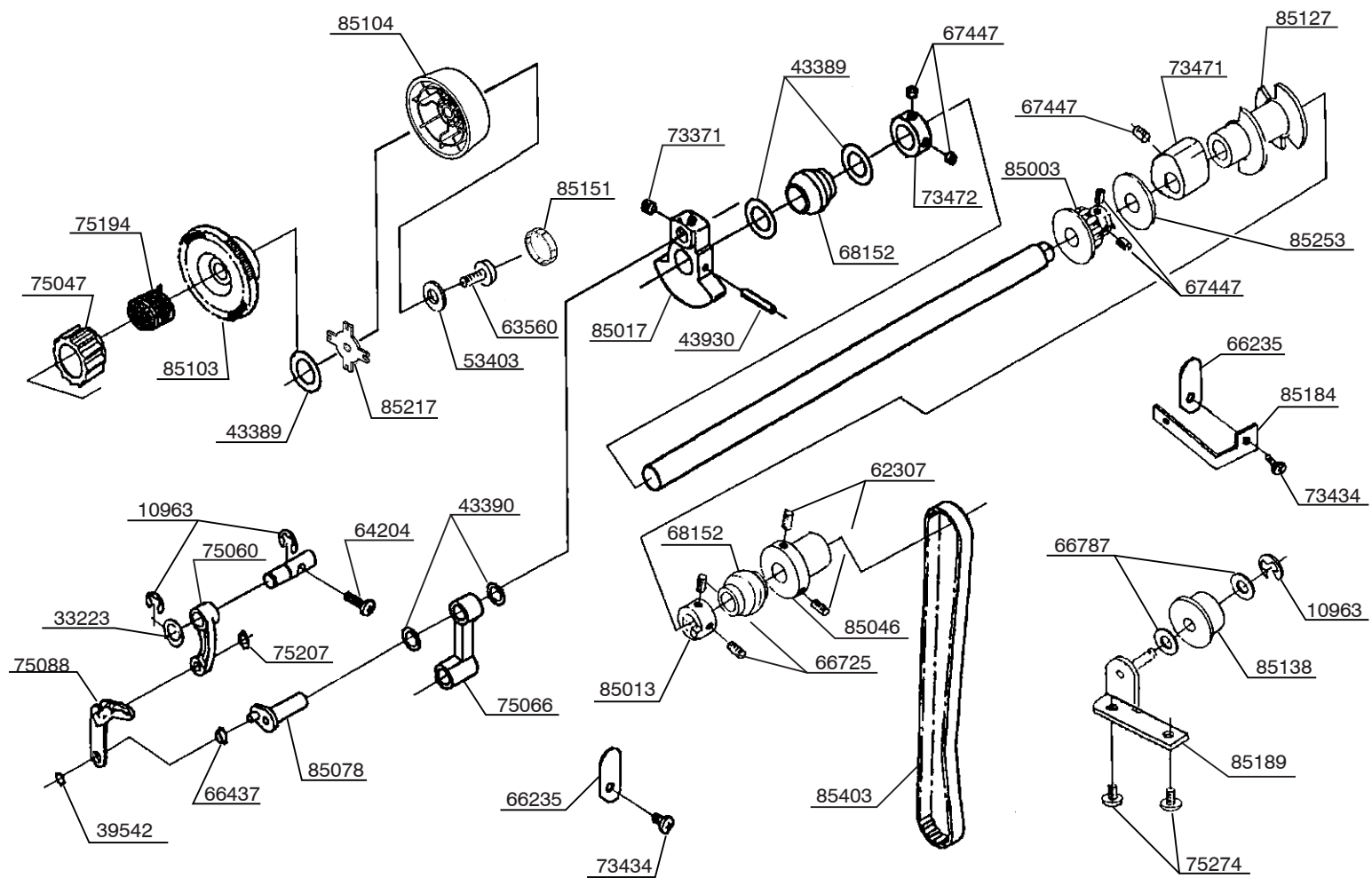
BUYER'S MODEL NO.	1500	SECTION	—	PAGE	1	REVISION		REMARKS		PART NO.	DESCRIPTION
BUYER'S MODEL NAME										61227	M6 PHILIPS SCREW
FACTORY MODEL	CA10060									61341	M4 SCREW
ORIGINAL ISSUE	September, 2000	SERIAL NO.								66124	RUBBER FOOT
										67533	RUBBER CUSHION
										72807	M4 STUD SCREW



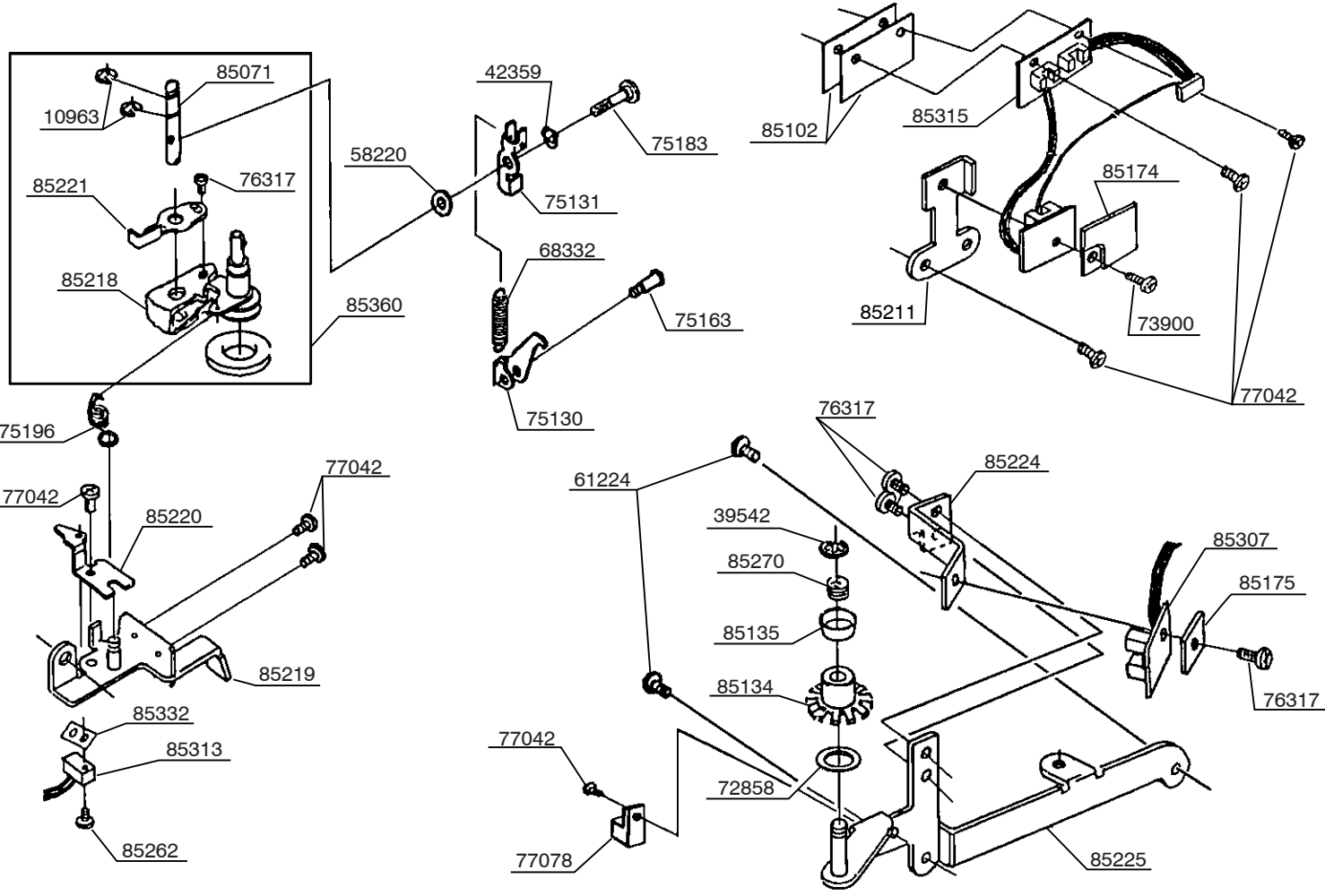
64203	TAPPING SCREW
73299	M4 TORQUE NUT
76015	LEG
77042	M4 PHILIPS SCREW
85109	BOTTOM COVER
85118	ACCESSORY BOX
85139	ACC.BOX COVER A
85140	ACC.BOX COVER B
85156	CORD GUIDE
85173	INSULATION BOX
85258	CUSHION

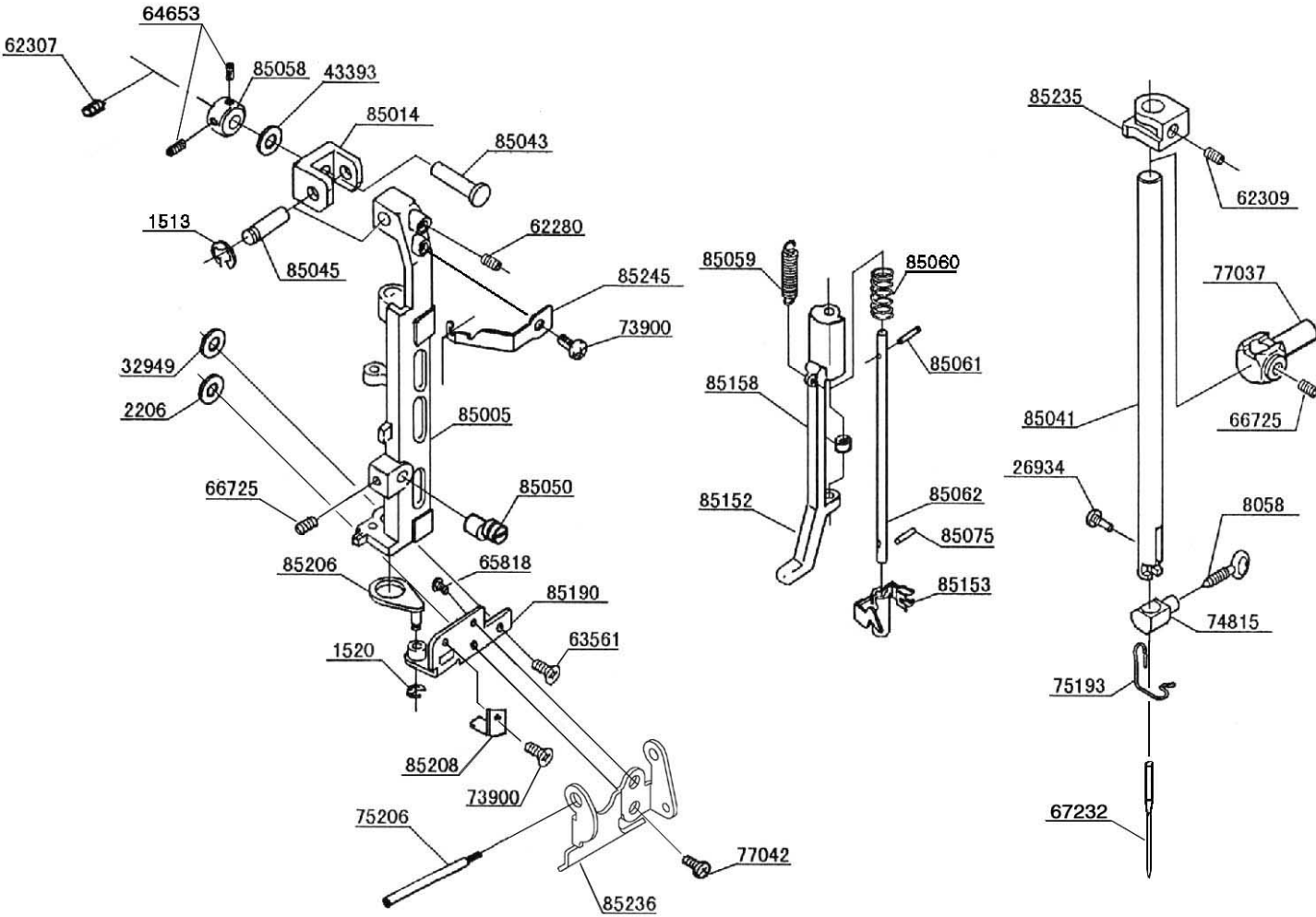
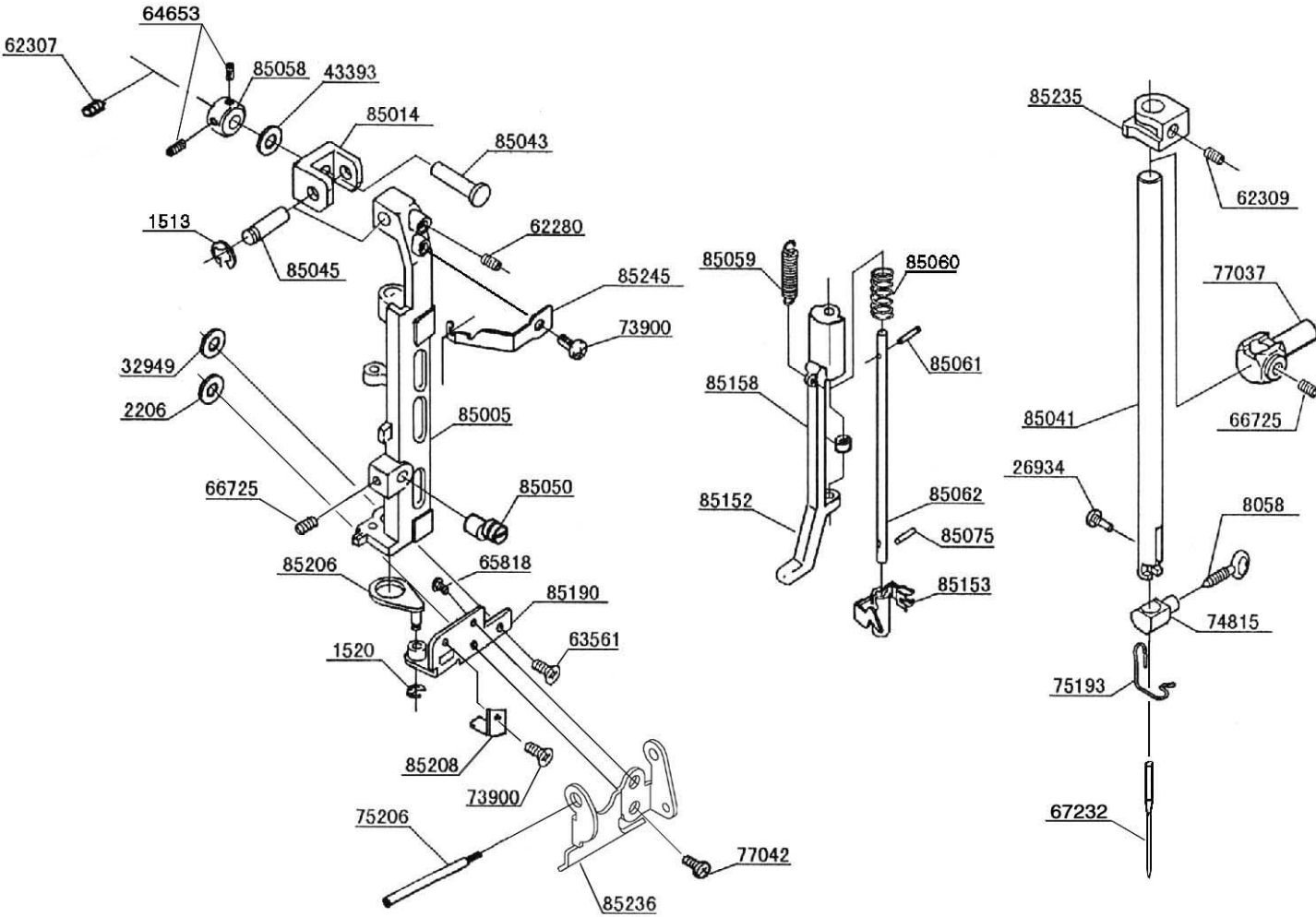
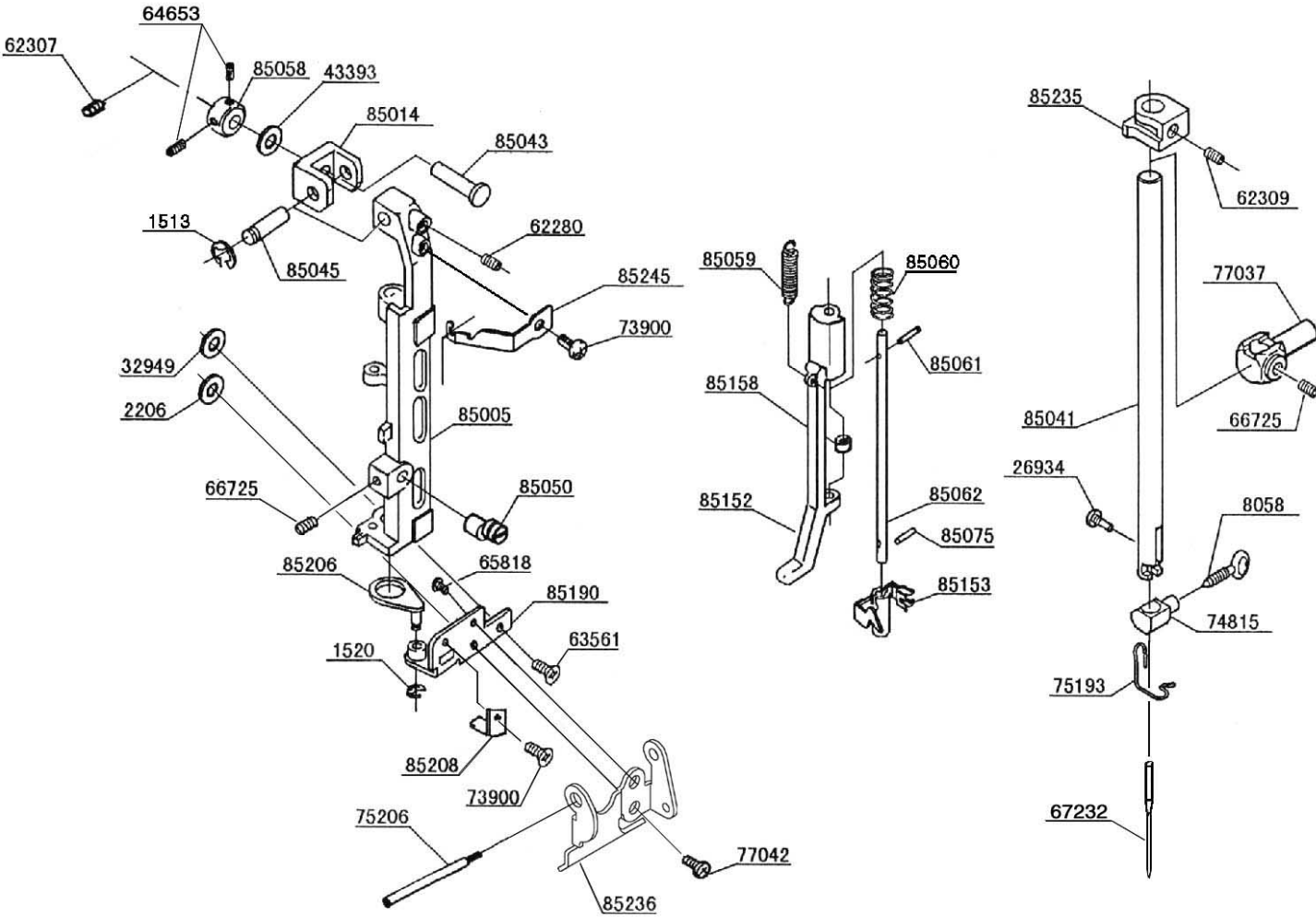
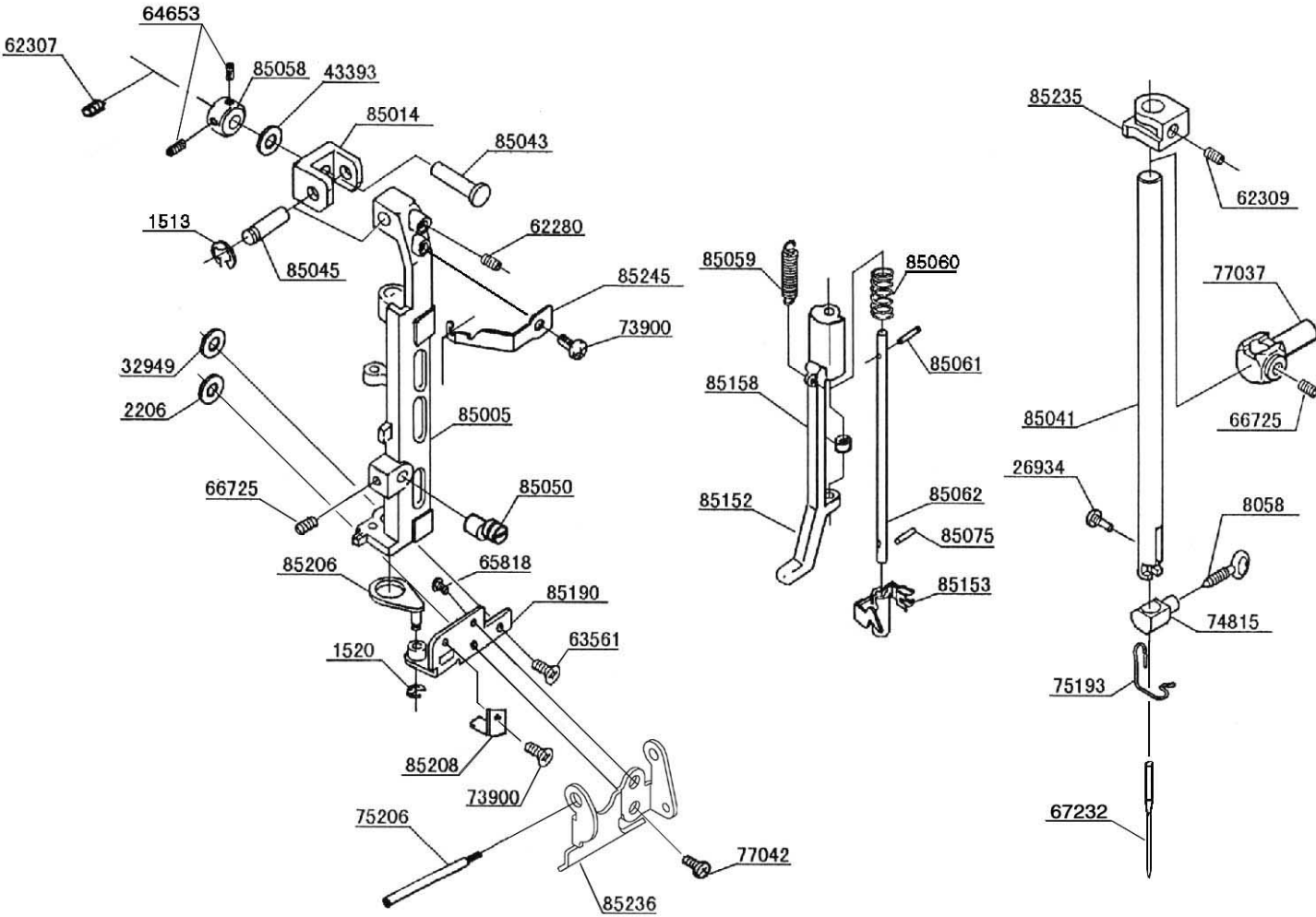
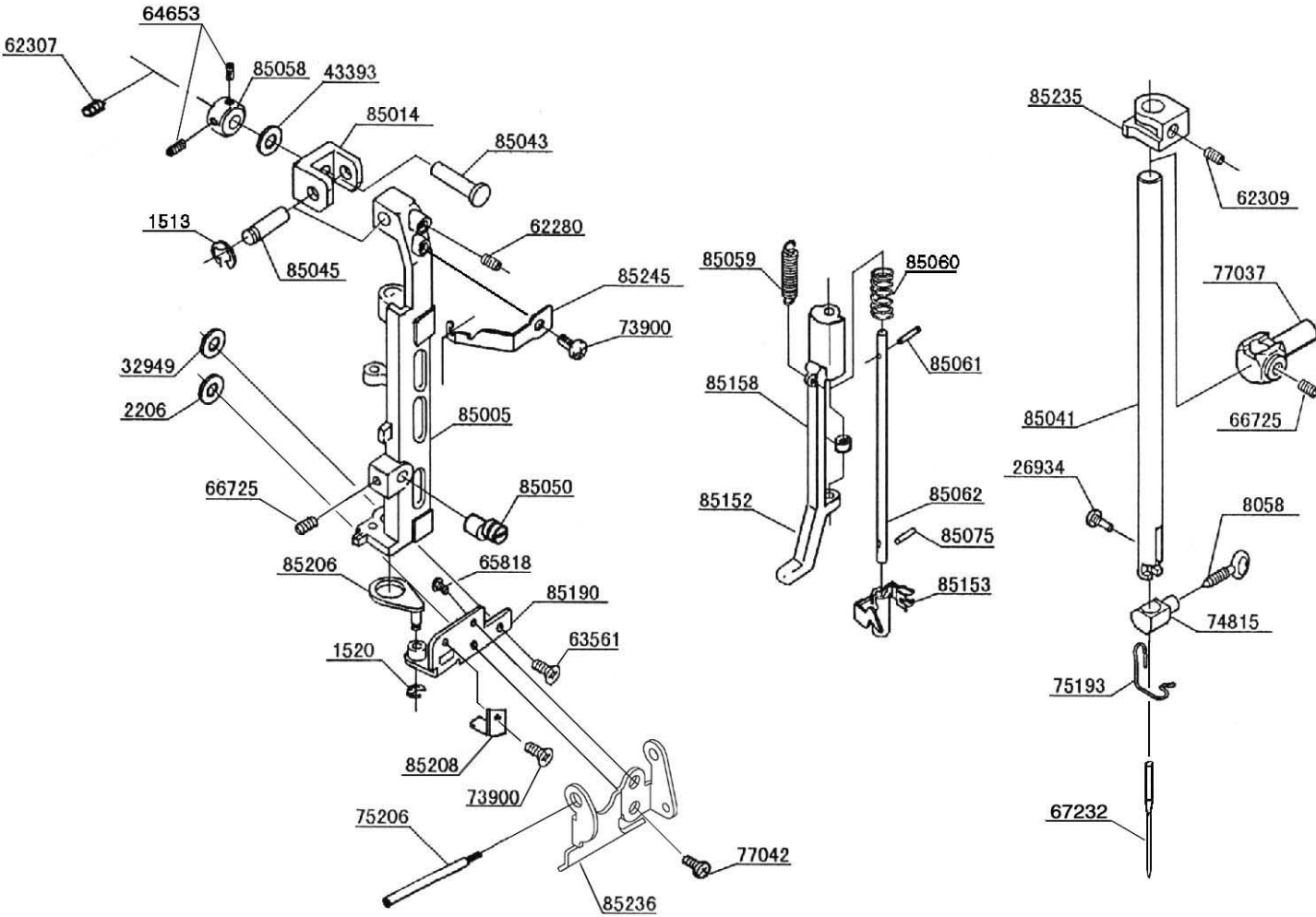
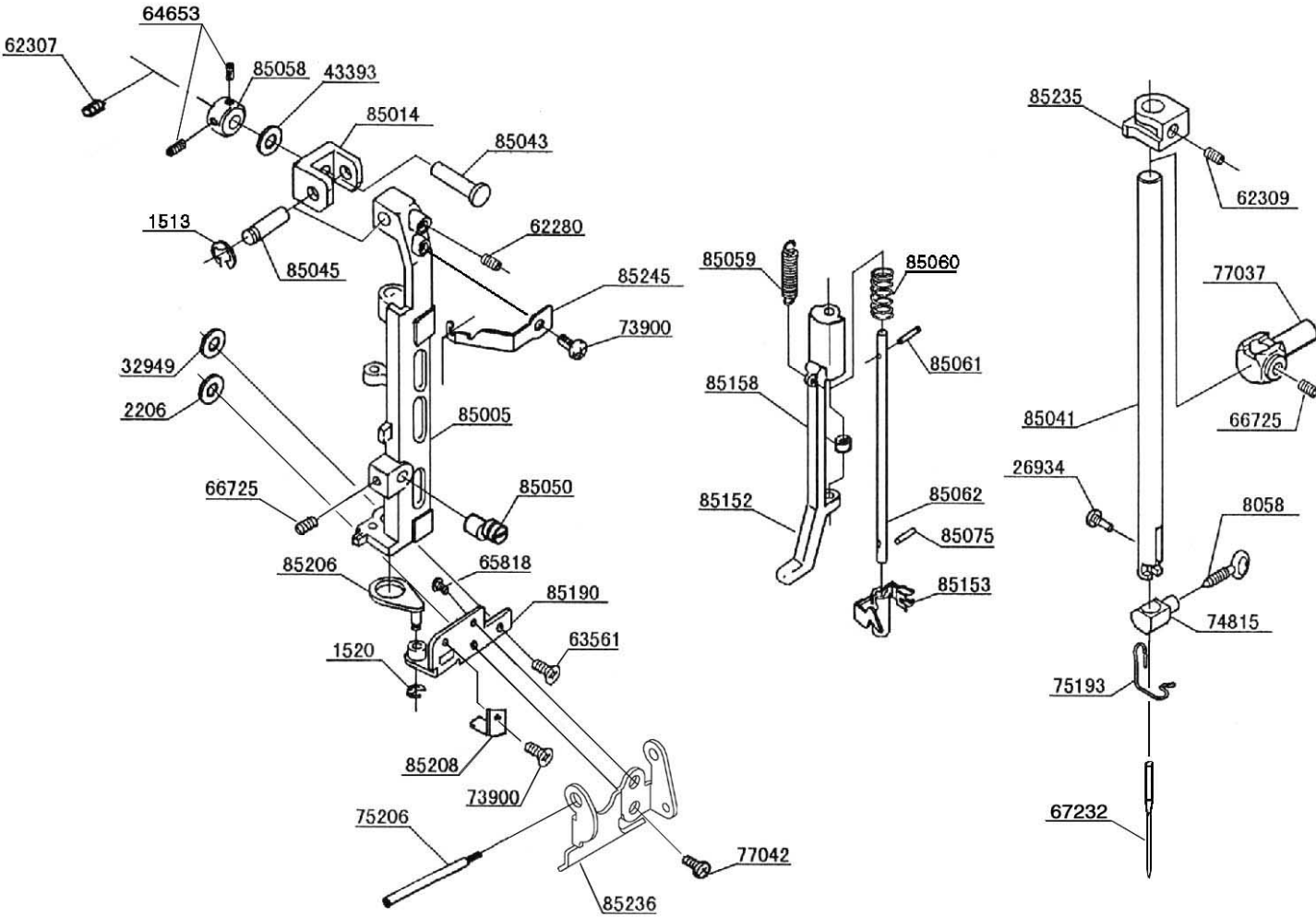
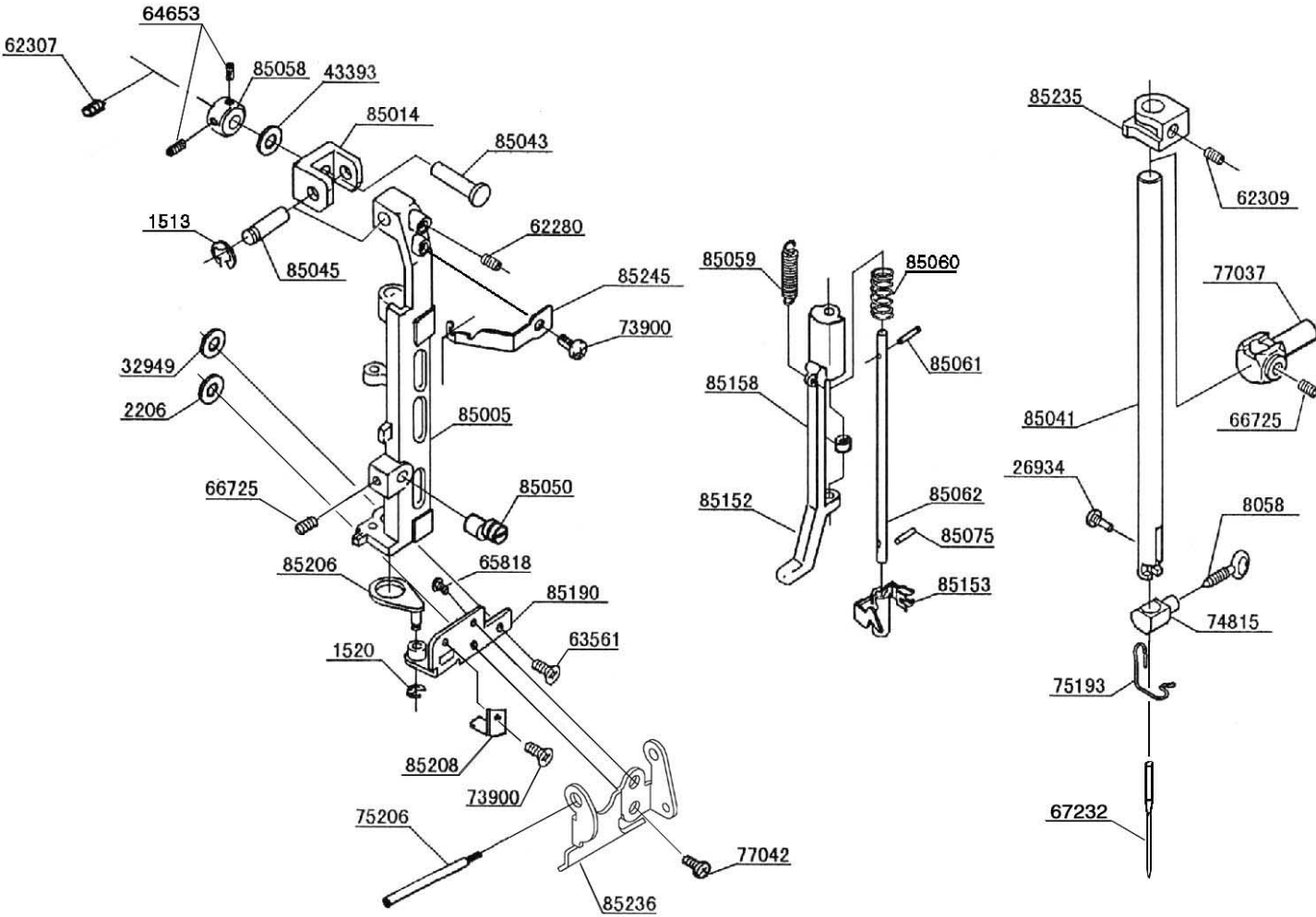
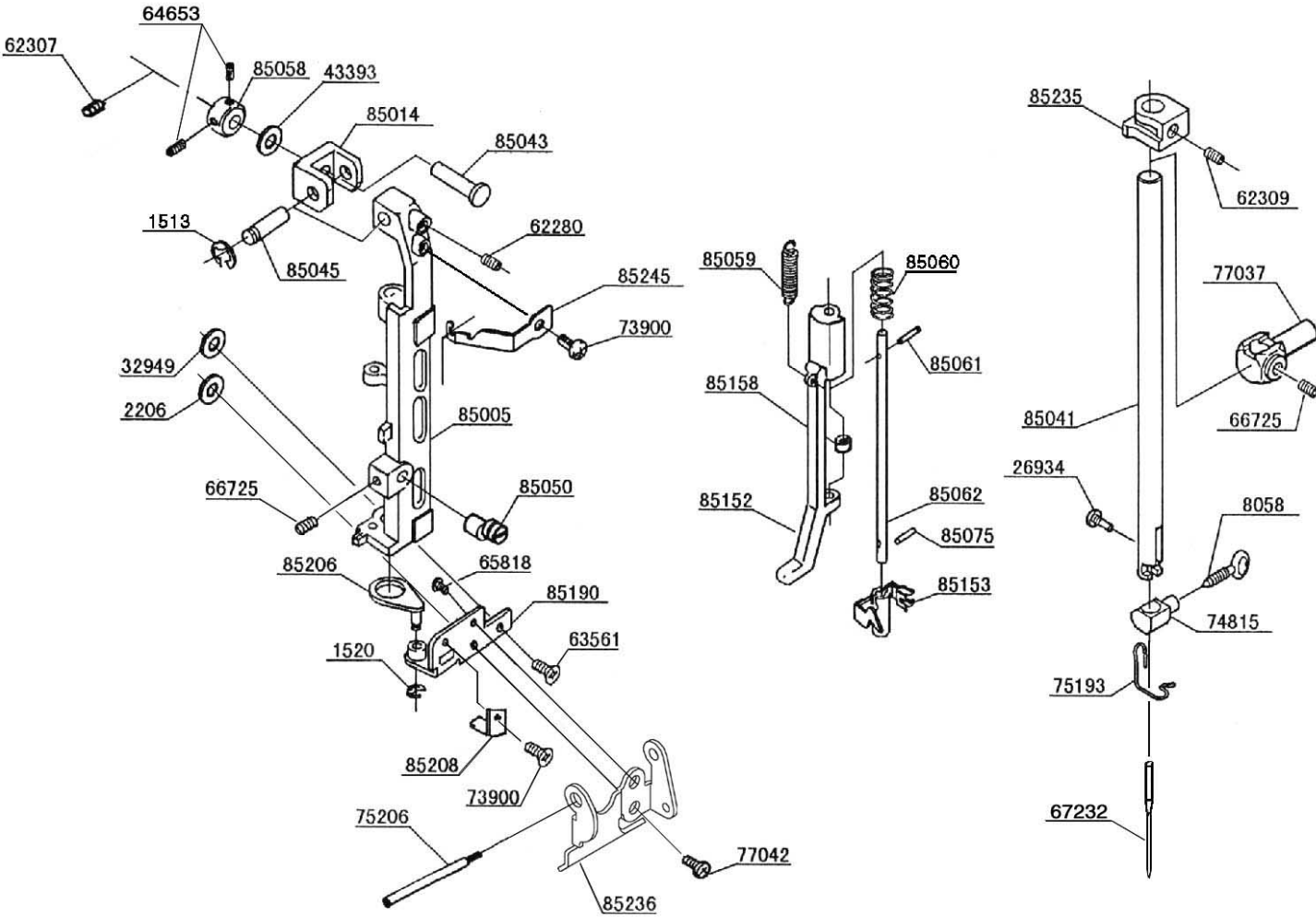
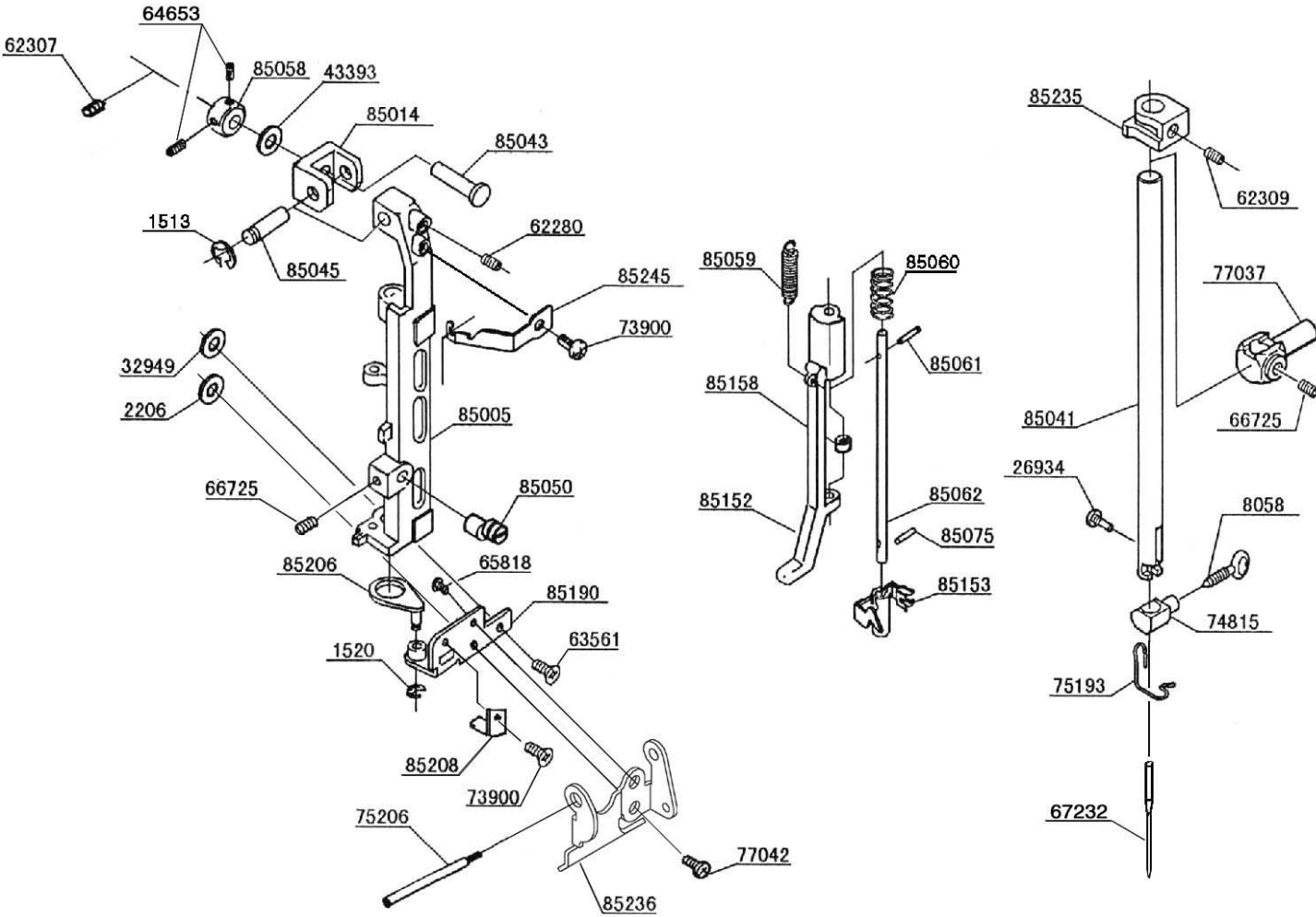
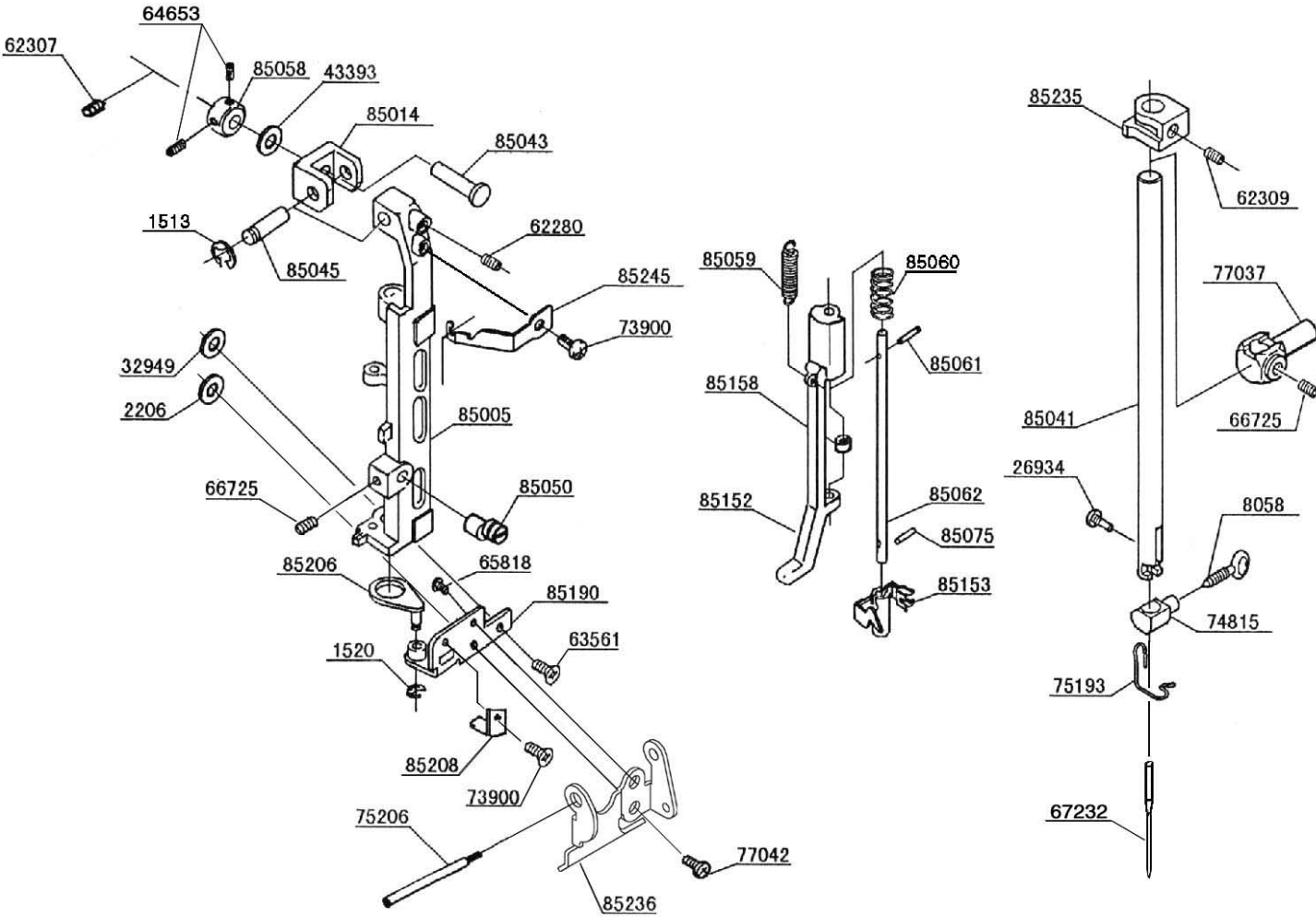
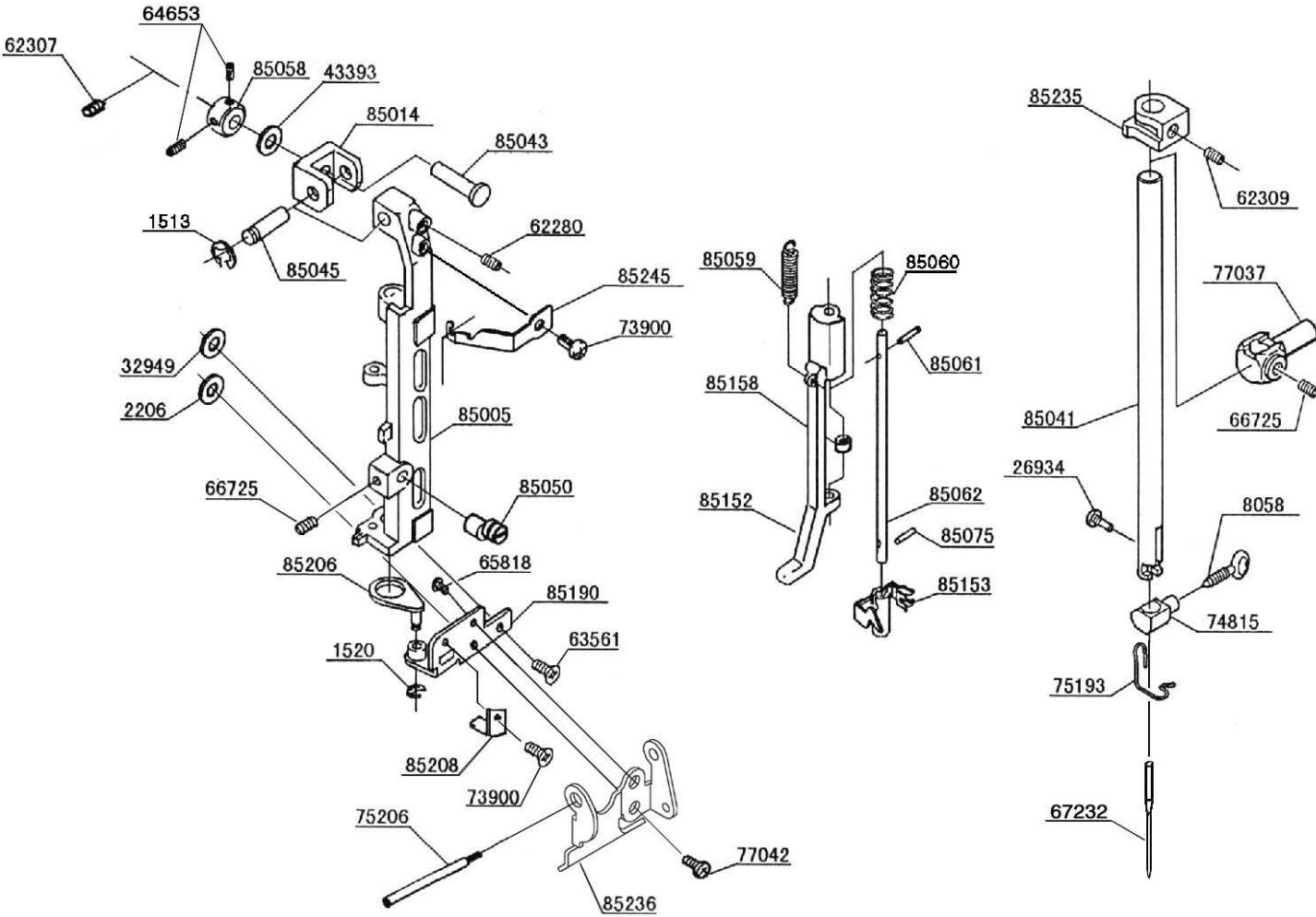
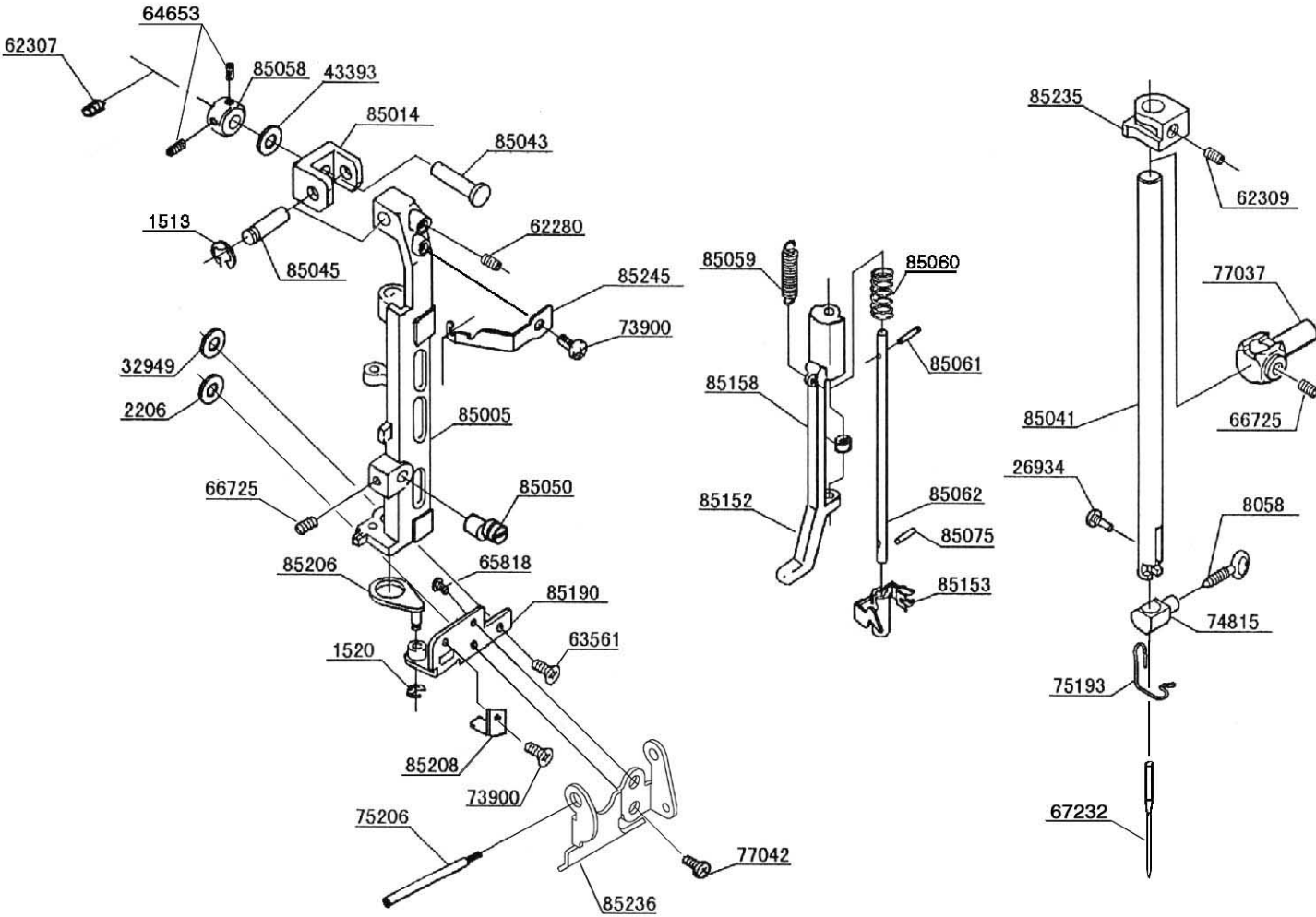
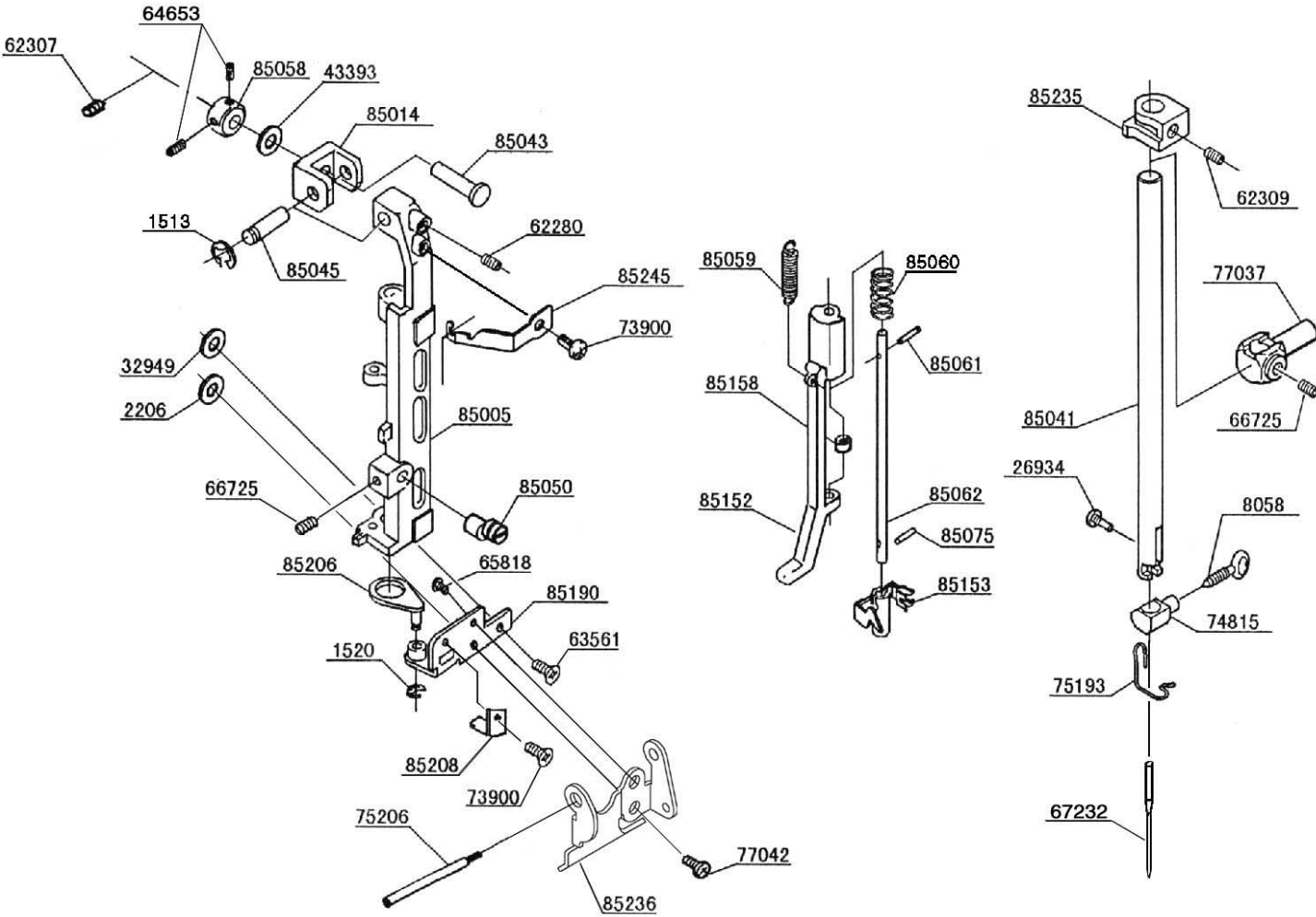
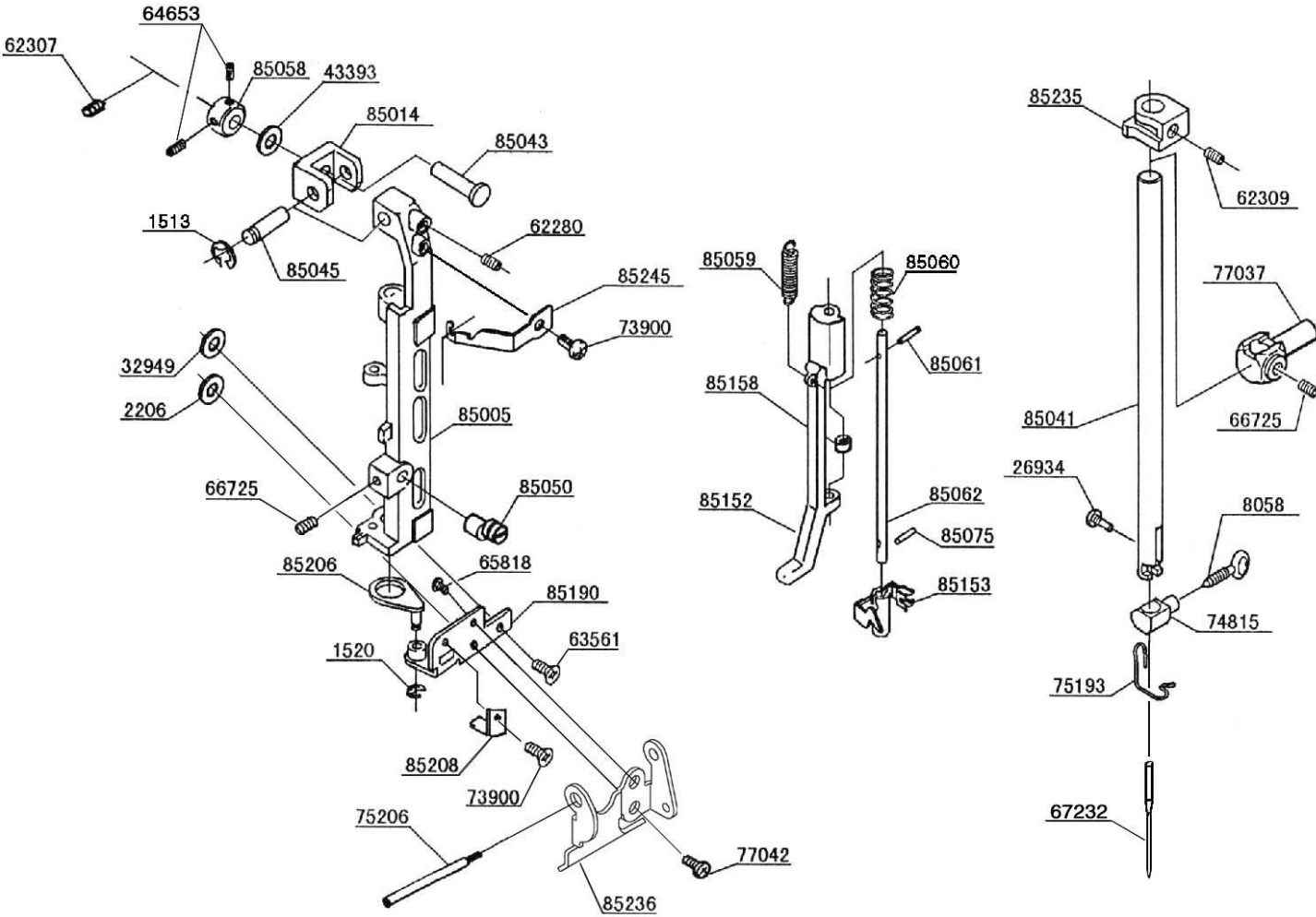
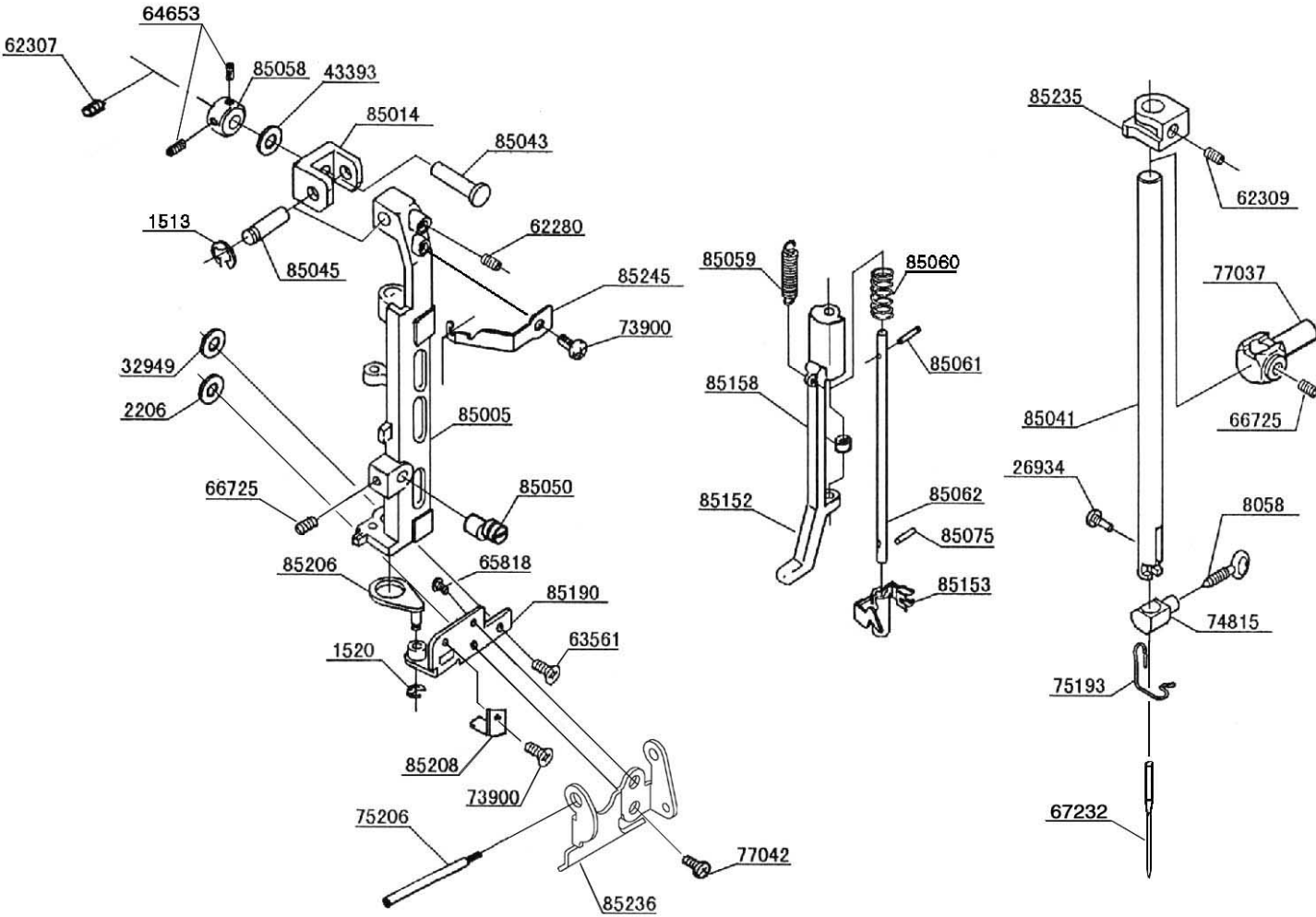
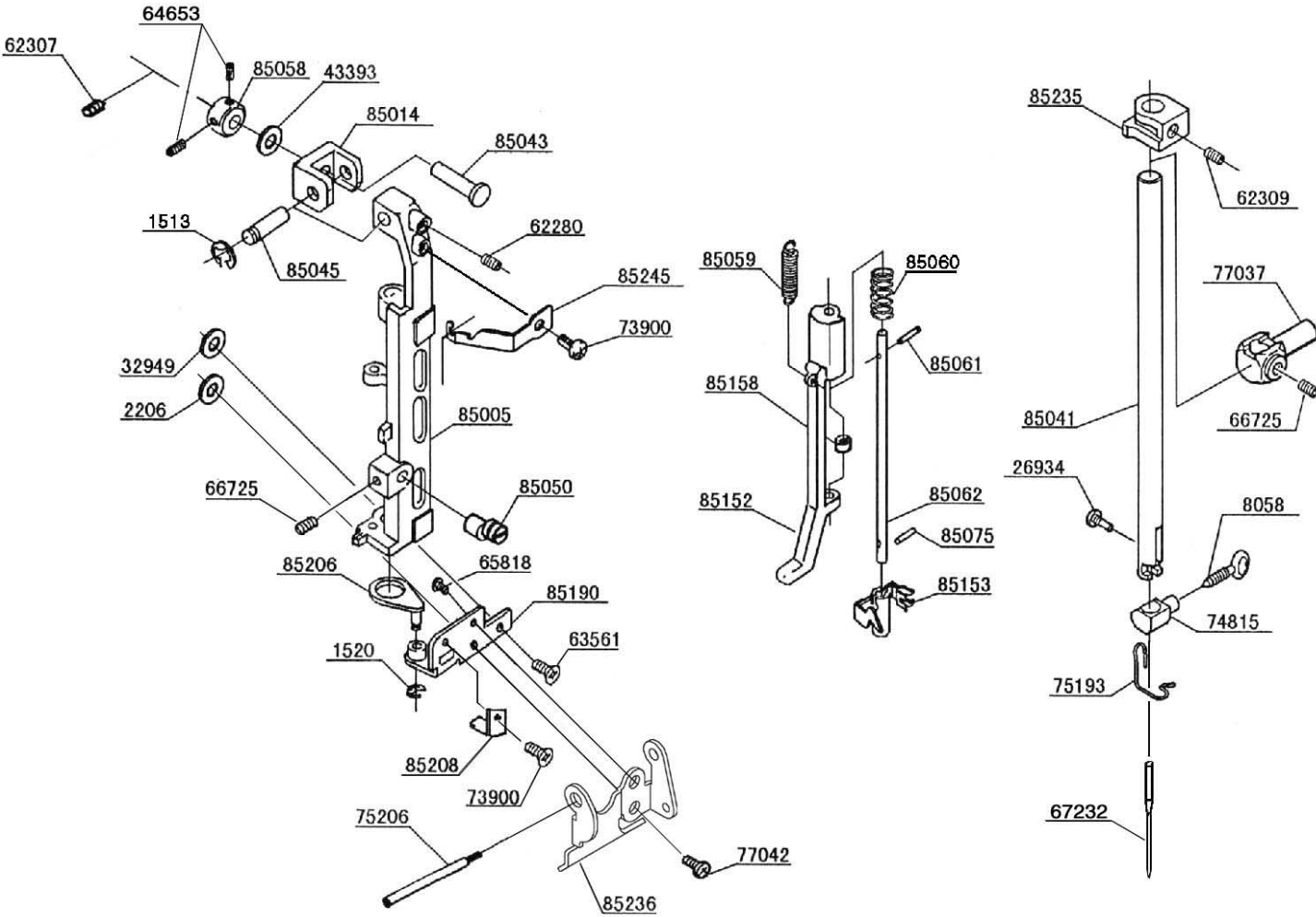
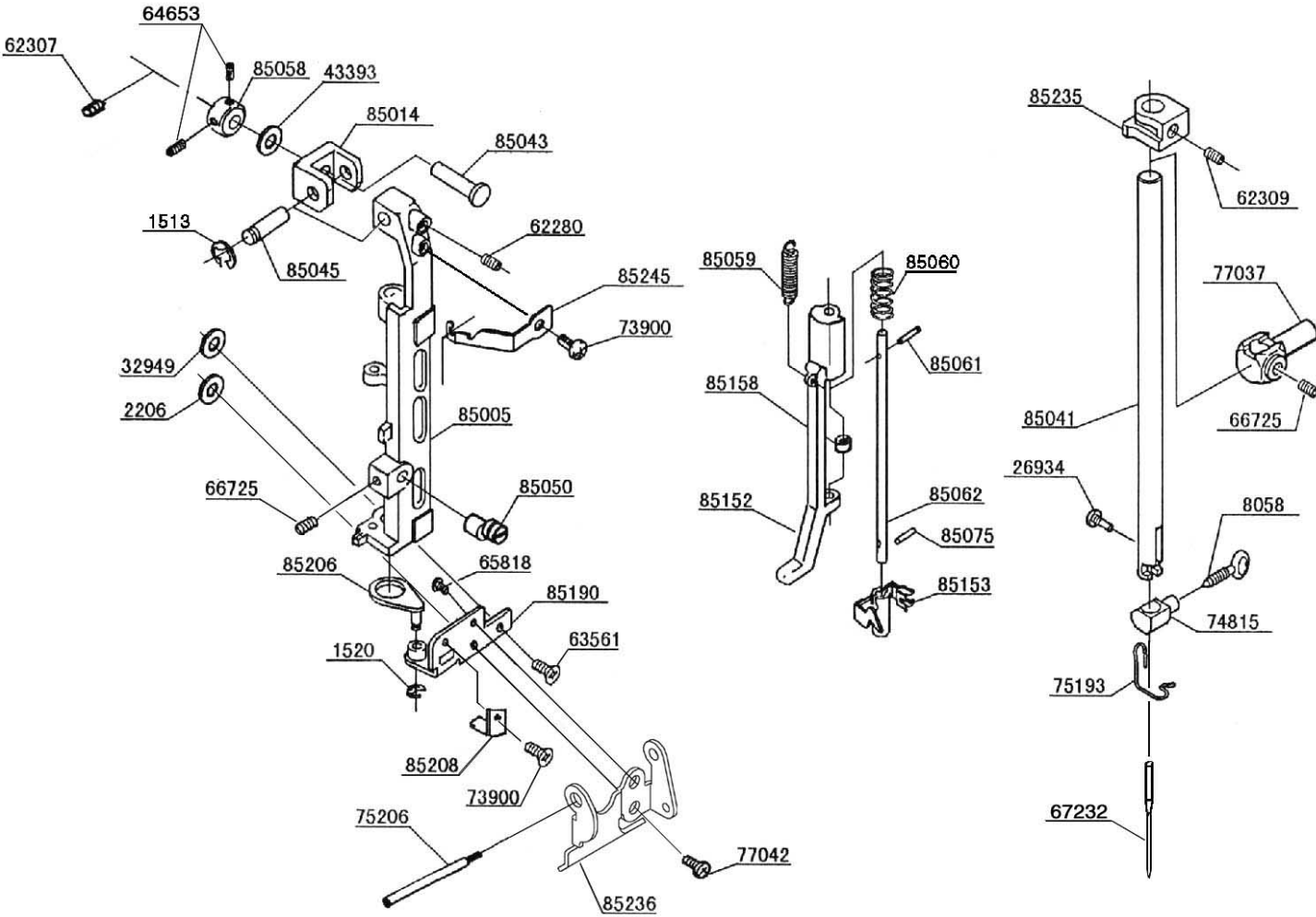
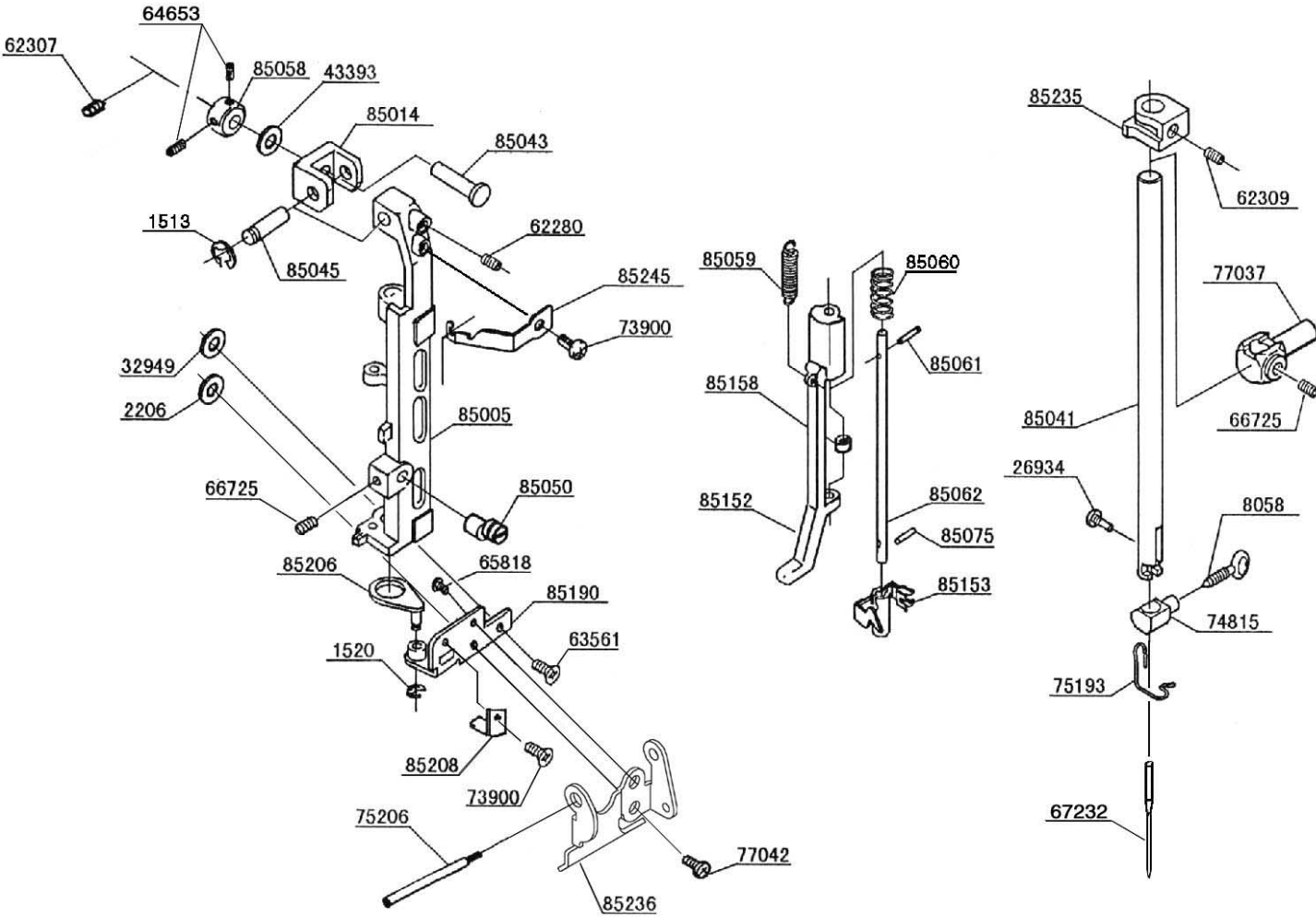
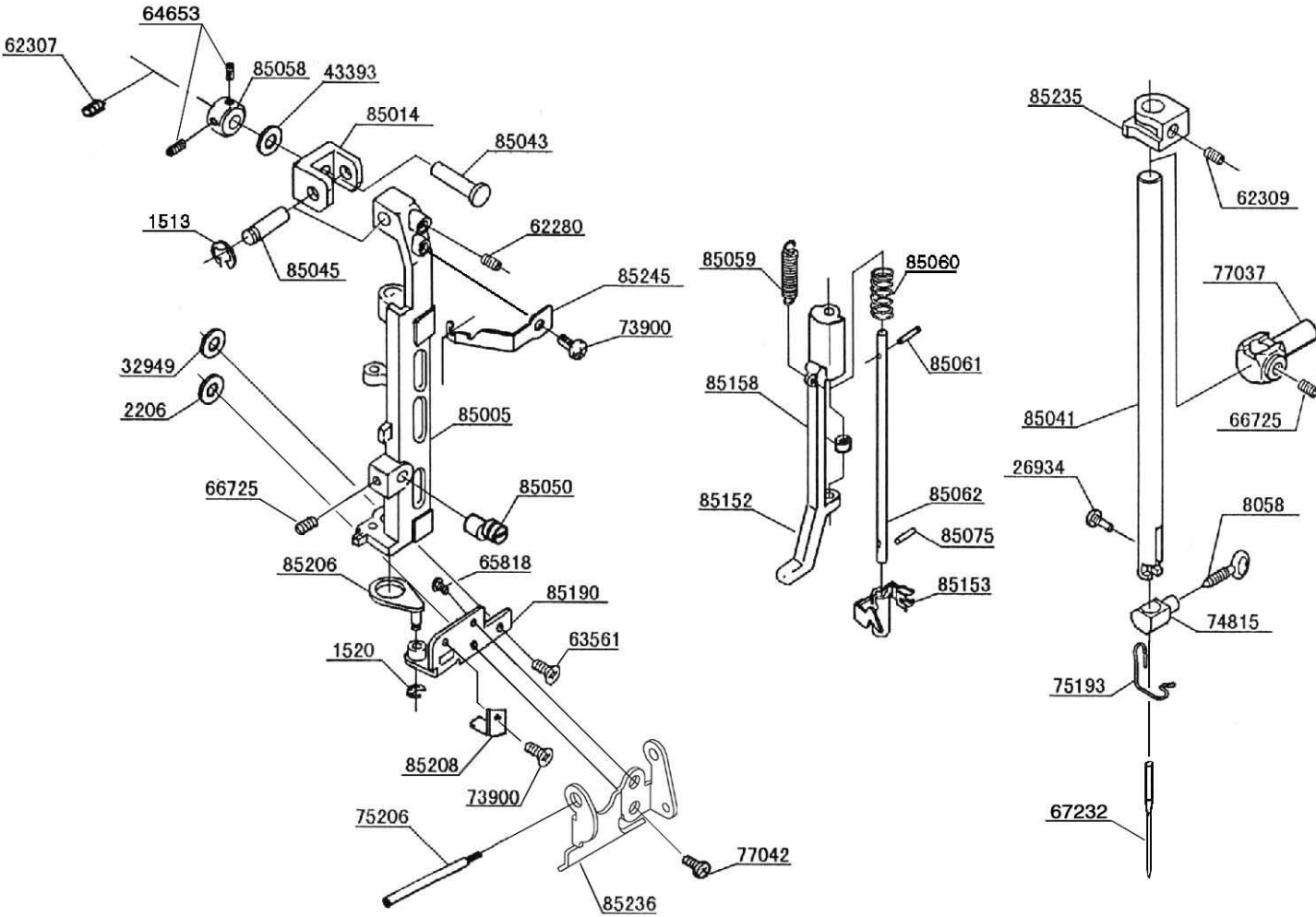
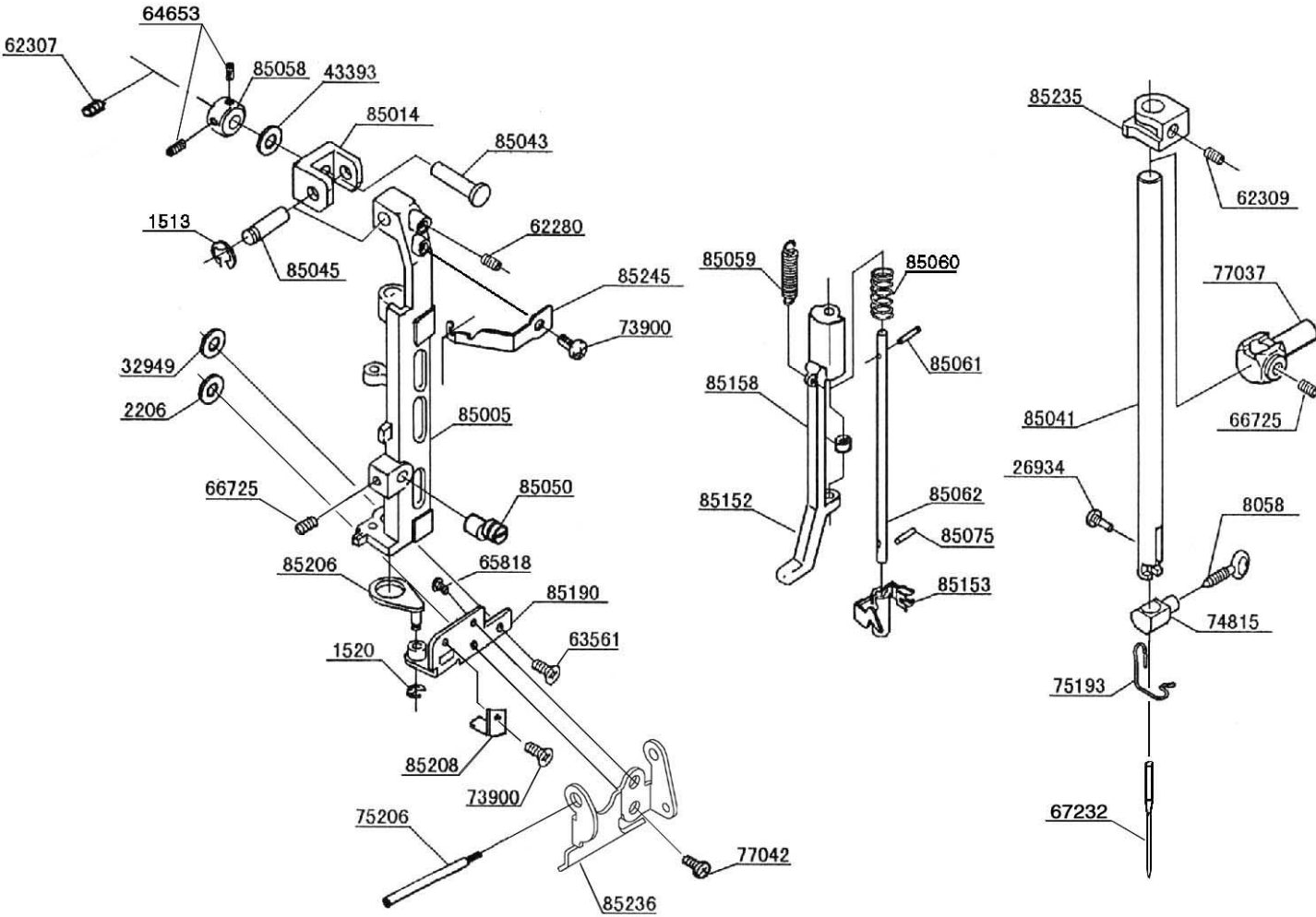
From the library of: Diamond Needle

BUYER'S MODEL NO.	1500	SECTION		PAGE	2	REVISION		REMARKS		PART NO.	DESCRIPTION
BUYER'S MODEL NAME										10963	E6 CLIP-ON-WASHER
FACTORY MODEL	CA10060									33223	WASHER
ORIGINAL ISSUE	September, 2000	SERIAL NO.								39542	CLIP-ON-WASHER
										43389	THRUST WASHER
										43390	THRUST WASHER
										43930	SPRING PIN
										53403	WASHER
										62307	M4 SCREW
										63560	M4 PHILIPS SCREW
										64204	M4 PHILIPS SCREW
										66235	SECURING PLATE
										66437	BUSH
										66725	M4 SCREW
										66787	WASHER
										67447	M5 SCREW
										68152	BALL BUSH
										73371	M6 SCREW
										73434	M4 PHILIPS SCREW
										73471	FEED REGULATING CAM
										73472	COLLAR
										75047	CLUTCH
										75060	TAKE-UP LEVER CRANK
										75066	NEEDLE BAR CRANK
										75088	TAKE-UP LEVER
										75159	SHAFT
										75194	TORSION SPRING
										75207	CS -CRIP
										75274	M4 PHILIPS SCREW
										85003	BELT PULLEY
										85013	POSITIONING COLLAR
										85017	BLANCER
										85040	MAIN SHAFT
										85046	METAL BUSH
										85078	CRANK STAFF
										85103	BELT PULLEY
										85104	HAND WHEEL
										85127	SENSOR CAM
										85138	TENSION ROLLER
										85151	PULLEY CAP
										85184	LEAF SPRING
										85189	TENSION ROLLER PLATE
										85217	RETAINER
										85253	WASHER
										85403	TIMING BELT



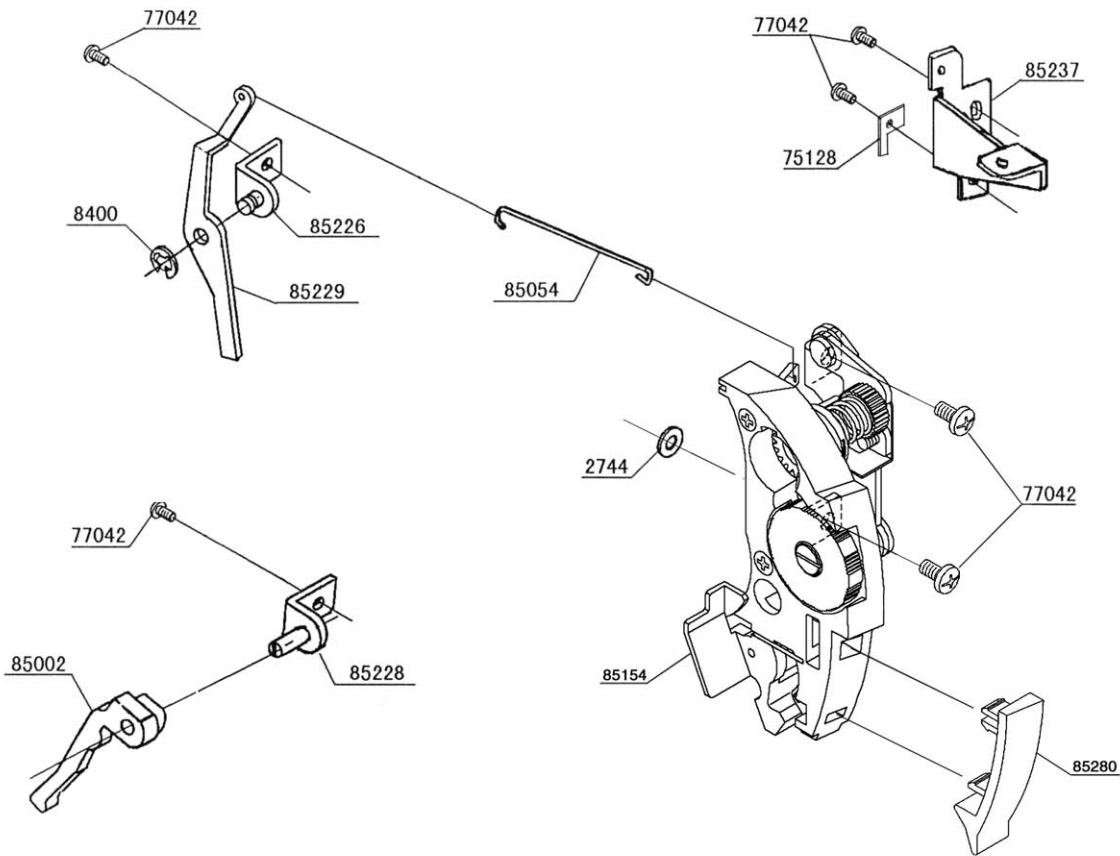
BUYER'S MODEL NO.	1500	SECTION	—	PAGE	3	REVISION		REMARKS		PART NO.	DESCRIPTION
BUYER'S MODEL NAME										10963	E6 CLIP-ON-WASHER
FACTORY MODEL	CA10060									39542	CLIP-ON-WASHER
ORIGINAL ISSUE	September,2000	SERIAL NO.								42359	CRINKLE WASHER
										58220	WASHER
										61224	M4 SCREW
										68332	EXTENSION SPRING
										72858	WASHER
										73900	M3 SCREW
										75130	RATCHET A
										75131	RATCHET B
										75163	M4 STUD SCREW
										75183	M4 STUD SCREW
										75196	TORSION SPRING
										76317	M3 SCREW
										77042	M4 PHILIPS SCREW
										77078	CORD GUARD
										85071	#8 SHAFT
										85102	PROTECTION SHEET
										85134	SENSOR WHEEL
										85135	END CAP
										85174	COVER
										85175	COVER
										85211	PLATE
										85218	BOBBIN WINDER BASE
										85219	BASE PLATE
										85220	ARM LEVER
										85221	ABUTMENT LEVER
										85224	SECURING PLATE
										85225	SECURING PLATE
										85262	M2 SCREW
										85270	COIL SPRING
										85307	THREAD SENSOR
										85313	SW HARNESS
										85315	MAIN SHAFT SENSOR HARNESS
										85332	SPACER
										85360	BOBBIN WINDER COMPLETE



BUYER'S MODEL NO.	1500	SECTION	PAGE	REVISION	REMARKS	PART NO.	DESCRIPTION
BUYER'S MODEL NAME		—	4			1513	E4-CLIP-ON-WASHER
FACTORY MODEL	CA10060					1520	E3-CLIP-ON-WASHER
ORIGINAL ISSUE	September, 2000	SERIAL NO.				2206	WASHER
						8058	NEEDLE CLAMP SCREW
						26934	#8 SCREW
						32949	WASHER
						43393	WASHER
						62280	M4 SCREW
						62307	M4 SCREW
						62309	M3 SCREW
						63561	M4 PHILIPS SCREW WITH WASHER
						64653	M3 SCREW
						65818	M4 BOLT
						66725	M4 SCREW
						67232	NEEDLE
						73900	M3 PHILIPS SCREW
						74815	NEEDLE CLAMP
						75193	THREAD GUIDE
						75206	SPOOL PIN
						77037	NEEDLE BAR CLAMP
						77042	M4 PHILIPS SCREW
						85005	NEEDLE BAR SUPPORT
						85014	FULCRUM BLOCK
						85041	NEEDLE BAR
						85043	HEADED PIN
						85045	PIN
						85050	ECCENTRIC
						85058	COLLAR
						85059	EXTENSION SPRING
						85060	COMPRESSION SPRING
						85061	SPRING PIN
						85062	THREADER SHAFT SET
						85075	SPRING PIN
						85152	LEVER
						85153	NDL THREADER HOOK
						85158	COLLAR
						85190	SUPPORT PLATE
						85206	PLATE
						85208	PLATE
						85235	STOPPER
						85236	THREAD GUIDE PLATE
						85245	LEAF SPRING

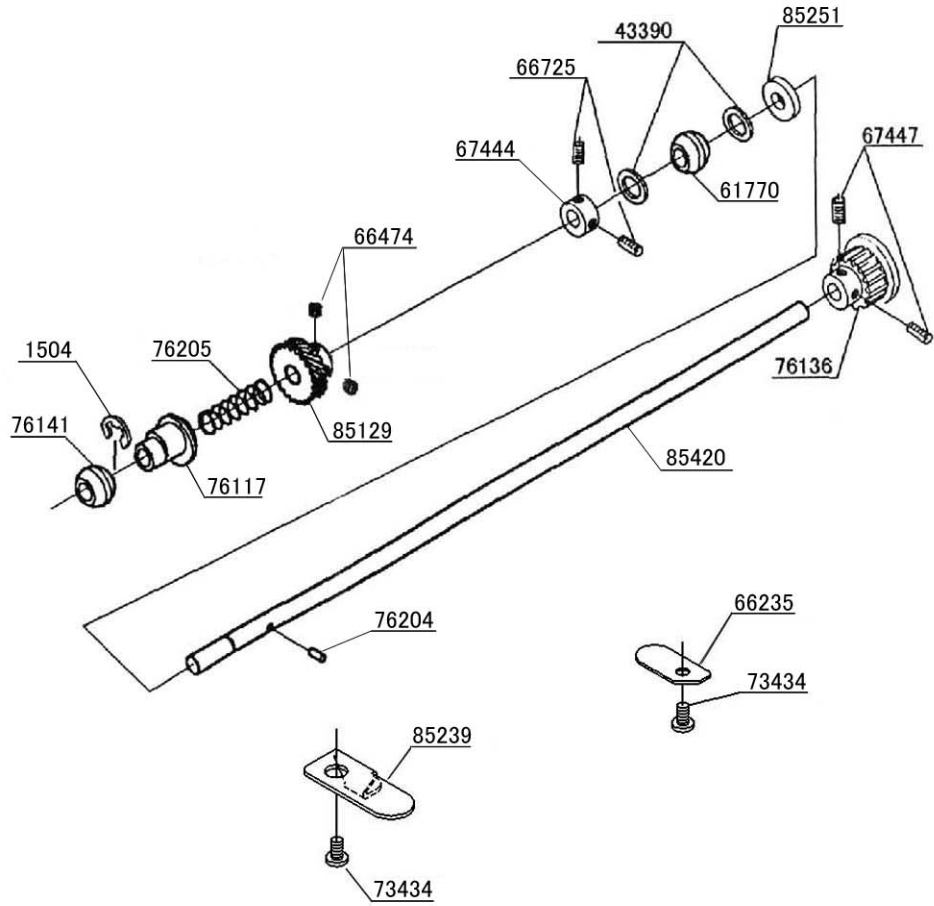
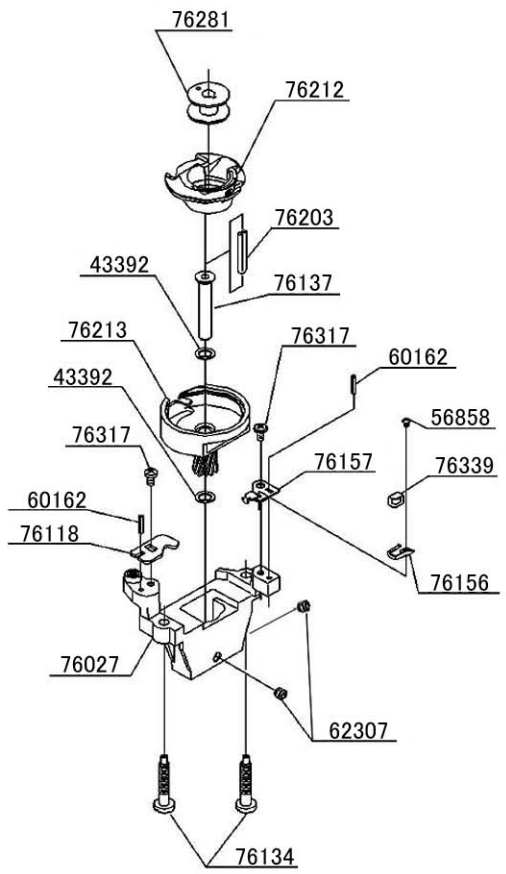
BUYER'S MODEL NO.	1500	SECTION	PAGE	REVISION	REMARKS	PART NO.	DESCRIPTION
BUYER'S MODEL NAME		—	5			1520	E3 CLIP-ON-WASHER
FACTORY MODEL	CA10060					56858	M2 PHILIPS SCREW
ORIGINAL ISSUE	September, 2000	SERIAL NO.				63278	PRESSER BAR
						64051	M4 SCREW
						66727	M4 SCREW
						68299	#7 SCREW FOR SHAFT
						73900	M3 SCREW
						76103	NEEDLE PLATE
						76114	COVER GUIDE (R)
						76115	THREAD CONTROL PLATE
						76158	RELEASE LEVER
						76159	COMPRESSION LEVER
						77041	UNITY FASTENER
						77042	M4 PHILIPS SCREW
						77043	FELT
						77044	M4 SCREW
						85015	ZIGZAG PRESSER FOOT
						85016	PRESSER FOOT HOLDER
						85064	EXTENSION SPRING
						85065	COMPRESSION SPRING
						85164	SHUTTLE RACE COVER
						85181	LEAF SPRING
						85182	CONTROL PLATE
						85183	COVER GUIDE (L)
						85197	LAMP BASE PLATE
85198	BH PLATE (A)						
85199	BH PLATE (B)						
85200	PRESSER BAR MOUNTING PLATE						
85207	REFLECTING PLATE						
85227	PRESSER BAR BLOCK						
85238	BH PLATE (C)						
85262	M2 SCREW						
85304	BH LEVER SWITCH						
85309	MINI SWITCH						
85310	LAMP						
85332	SPACER						

BUYER'S MODEL NO.	1500	SECTION	—	PAGE	6	REVISION		REMARKS		PART NO.	DESCRIPTION
BUYER'S MODEL NAME										2744	WASHER
FACTORY MODEL	CA10060									8400	E5 CLIP-ON-WASHER
ORIGINAL ISSUE	September, 2000	SERIAL NO.								75128	SECURING PLATE
										77042	M4 PHILIPS SCREW
										85002	PRESSER BAR LIFTER
										85054	CONNECTING WIRE
										85154	THREAD GUIDE PLATE UNIT
										85226	PLATE WITH PIN
										85228	PLATE WITH PIN
										85229	RELEASE LEVER
										85237	COVER MOUNTING PLATE ATTACHMENT
										85280	ATTACHMENT



From the library of: Diamond Needle Corp

BUYER'S MODEL NO.	1500	SECTION		PAGE	7	REVISION		REMARKS		PART NO.	DESCRIPTION
BUYER'S MODEL NAME										1504	E7 CLIP-ON-WASHER
FACTORY MODEL	CA10060									43390	THRUST WASHER
ORIGINAL ISSUE	September, 2000	SERIAL NO.								43392	THRUST WASHER
										56858	M2 PHILIPS SCREW
										60162	KNOCK PIN
										61770	BALL METAL
										62307	M4 SCREW
										66235	SECURING PLATE
										66474	M5 SCREW
										66725	M4 SCREW
										67444	COLLAR
										67447	M5 SCREW
										73434	M4 PHILIPS SCREW
										76027	SHUTTLE RACE BASE
										76117	FEED LIFTING CAM
										76118	BOBBIN CASE STOPPER
										76134	SCREW
										76136	BELT PULLEY
										76137	SHUTTLE RACE SHAFT
										76141	BALL METAL
										76156	RETAINER SPRING
										76157	RETAINER
										76203	OILING CORD
										76204	PIN
										76205	TORSION SPRING
										76212	BOBBIN CASE
										76213	SHUTTLE RACE
										76281	BOBBIN
										76317	M3 PHILIPS SCREW
										76339	CUSHION
										85042	LOWER SHAFT
										85129	BEVEL GEAR
										85239	SECURING PLATE
										85251	WASHER

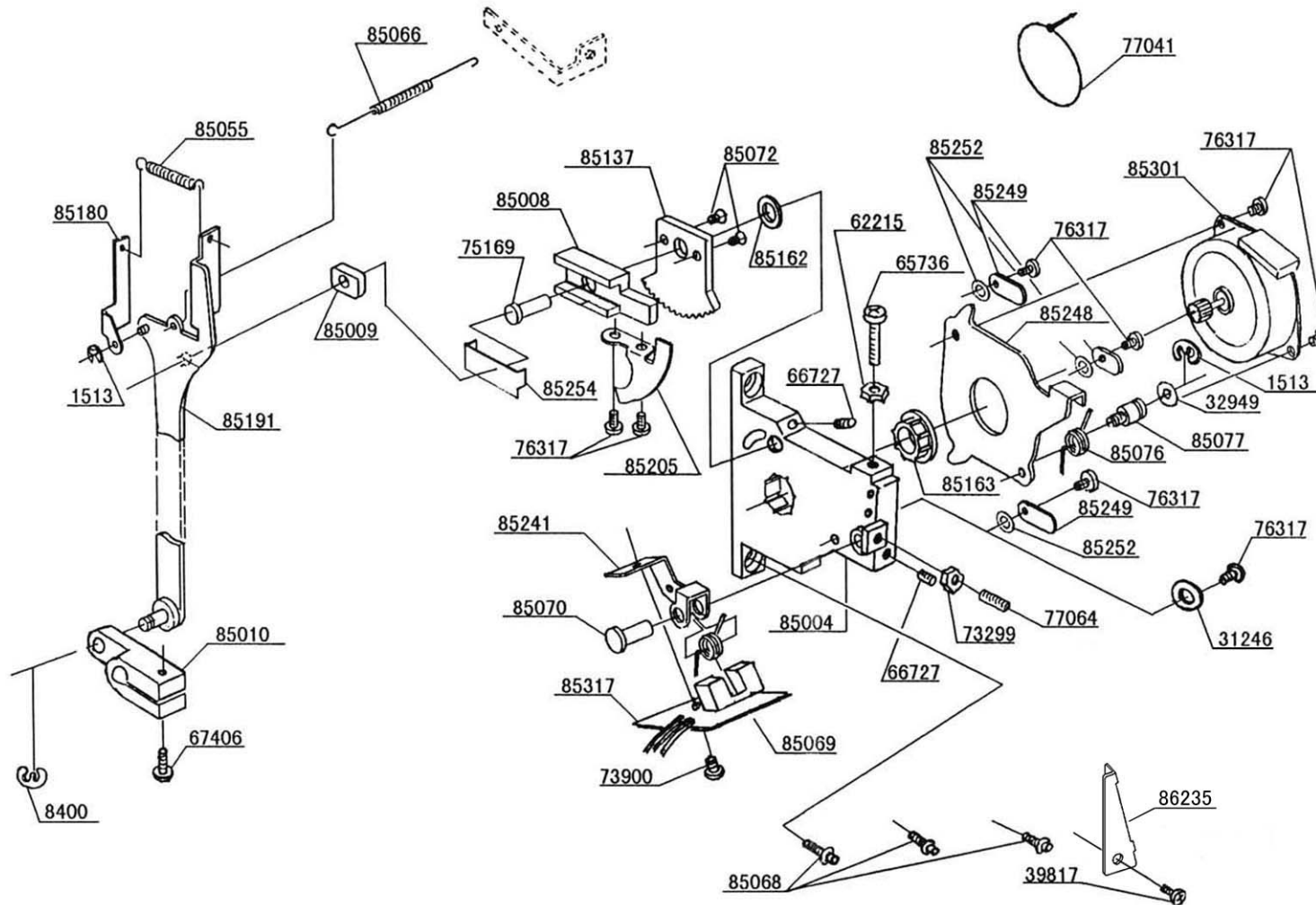


BUYER'S MODEL NO.	1500	SECTION		PAGE	7	REVISION		REMARKS		PART NO.	DESCRIPTION
BUYER'S MODEL NAME										1504	E7 CLIP-ON-WASHER
FACTORY MODEL	CA10060									43390	THRUST WASHER
ORIGINAL ISSUE	September, 2000	SERIAL NO.								43392	THRUST WASHER
										56858	M2 PHILIPS SCREW
										60162	KNOCK PIN
										61770	BALL METAL
										62307	M4 SCREW
										66235	SECURING PLATE
										66474	M5 SCREW
										66725	M4 SCREW
										67444	COLLAR
										67447	M5 SCREW
										73434	M4 PHILIPS SCREW
										76027	SHUTTLE RACE BASE
										76117	FEED LIFTING CAM
										76118	BOBBIN CASE STOPPER
										76134	SCREW
										76136	BELT PULLEY
										76137	SHUTTLE RACE SHAFT
										76141	BALL METAL
										76156	RETAINER SPRING
										76157	RETAINER
										76203	OILING CORD
										76204	PIN
										76205	TORSION SPRING
										76212	BOBBIN CASE
										76213	SHUTTLE RACE
										76281	BOBBIN
										76317	M3 PHILIPS SCREW
										76339	CUSHION
										85042	LOWER SHAFT
										85129	BEVEL GEAR
										85239	SECURING PLATE
										85251	WASHER

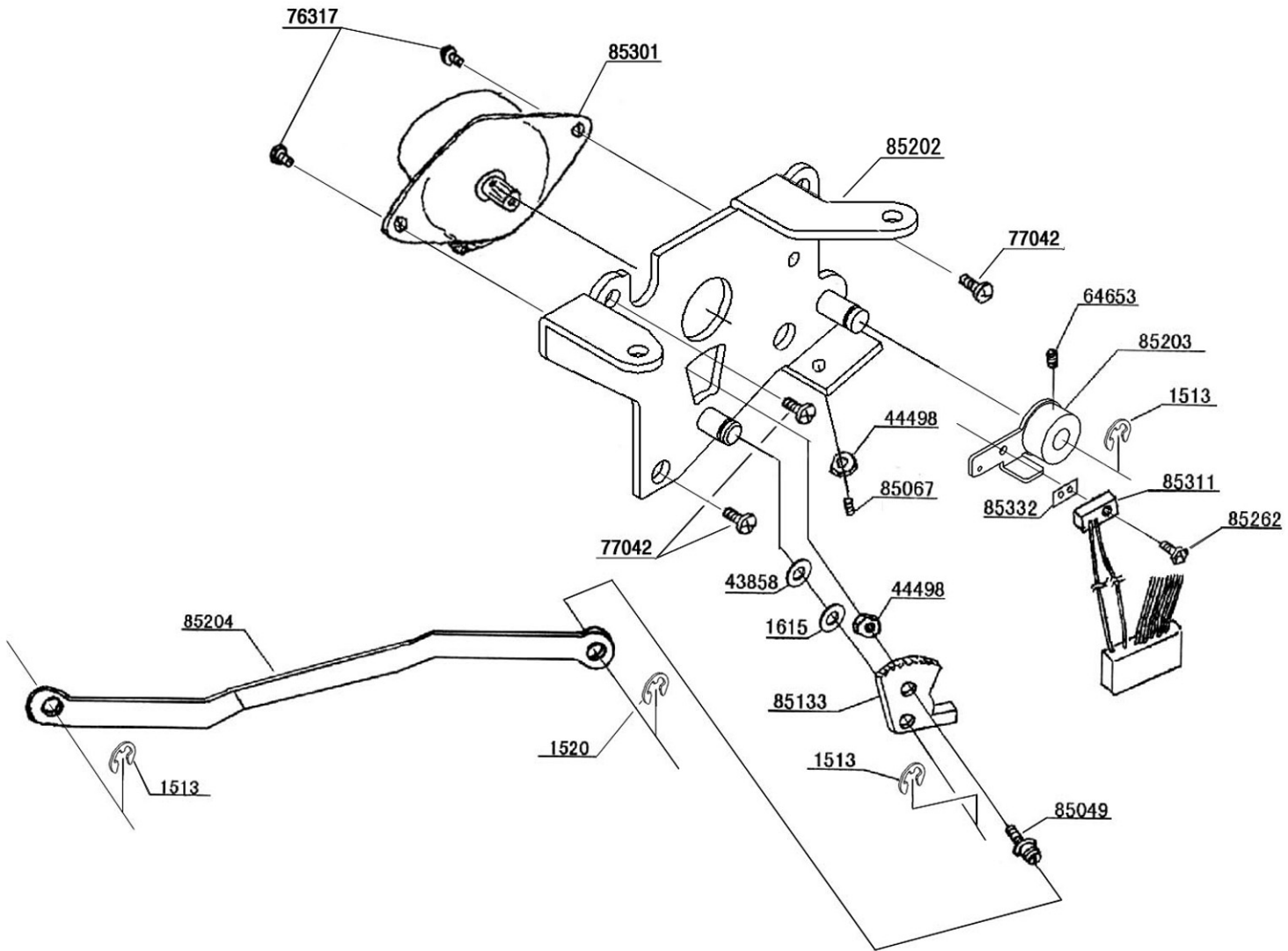
BUYER'S MODEL NO.	1500	SECTION		PAGE	8	REVISION		REMARKS		PART NO.	DESCRIPTION
BUYER'S MODEL NAME										37515	WASHER
FACTORY MODEL	CA10060									39817	M4 PHILIPS SCREW
ORIGINAL ISSUE	September, 2000	SERIAL NO.								43390	WASHER
										43858	WASHER
										61381	CRINKLE WASHER
										61770	BALL METAL
										64653	M3 SCREW
										66235	SECURING PLATE
										66481	M4 STUD SCREW
										66725	M4 SCREW
										67444	COLLAR
										72791	M4 SCREW
										72826	EXTENSION SPRING
										73299	M4 TORQUE NUT
										73434	M4 PHILIPS SCREW
										76025	FEED DOG BASE
										76122	FEED BASE ADJUSTMENT
										76125	SPRING HOOK PLATE
										76141	BALL METAL
										76324	M4 SCREW
										77042	M4 PHILIPS SCREW
										85020	FEED DOG
										85044	HORIZONTAL FEED SHAFT
85052	PIN W / HEAD										
85192	FEED-DOG BASE BRACKET										
85247	SECURING PLATE										

From the Internet

BUYER'S MODEL NO.	1500	SECTION		PAGE	9	REVISION		REMARKS		PART NO.	DESCRIPTION
BUYER'S MODEL NAME										1513	E4 CLIP-ON-WASHER
FACTORY MODEL	CA10060									8400	E5 CLIP-ON-WASHER
ORIGINAL ISSUE	September, 2000	SERIAL NO.								31246	WASHER
										32949	WASHER
										39817	M4 PHILIPS SCREW
										62215	M4 NUT
										65736	M4 PHILIPS SCREW
										66727	M4 SCREW
										67406	M4 SCREW
										73299	M4 TORQUE NUT
										73900	M3 SCREW
										75169	HEAD PIN
										76317	M3 SCREW
										77041	UNITY FASTENER
										77064	M4 SCREW
										85004	MOUNTING BRACKET
										85008	FEED CONTROL REGULATOR
										85009	SLIDE BLOCK
										85010	FEED CONTROL LOCKING LEVER
										85055	EXTENSION SPRING
										85066	EXTENSION SPRING
										85068	CAP-BOLT
										85069	SPRING
										85070	PIN W / HEAD
										85072	M3 SCREW
										85076	TORSION SPRING
										85077	SCREW W / SHAFT
										85137	FEED CONTROL GEAR
										85163	RING
										85162	WASHER
										85180	PLATE
										85191	FEED CONTROL ROD
										85205	SENSOR PLATE
										85241	BRACKET
										85248	MOTOR BRACKET
										85249	SECURING PLATE
										85252	WASHER
										85254	PLATE
										85301	STEP MOTOR
										85317	SENSOR UNIT
										86235	PLATE



From the Internet: <http://www.mechassis.com>

BUYER'S MODEL NO.	1500	SECTION	PAGE	REVISION	REMARKS	PART NO.	DESCRIPTION
BUYER'S MODEL NAME		—	10			1513	E4 CLIP-ON-WASHER
FACTORY MODEL	CA10060						1520
ORIGINAL ISSUE	September, 2000	SERIAL NO.				1615	WASHER
						43858	WASHER
						44498	M3 NUT
						64653	M3 SCREW
						76317	M3 SCREW
						77042	M4 PHILIPS SCREW
						85049	STUD SCREW
						85067	M3 SCREW
						85133	ZIGZAG DRIVE GEAR
						85202	MOTOR BRACKET
						85203	SENSOR SUPPORT LEVER
						85204	ZIGZAG CONNECTING ROD
						85262	M2 SCREW
						85301	STEP MOTOR
						85311	SENSOR UNIT
						85332	SPACER

From the library of: Diamond Needle

BUYER'S MODEL NO.	1500	SECTION		PAGE	11	REVISION		REMARKS		PART NO.	DESCRIPTION
BUYER'S MODEL NAME		—	11						61221	M4 SCREW	
FACTORY MODEL	CA10060								61224	M4 SCREW	
ORIGINAL ISSUE	September, 2000	SERIAL NO.							73900	M3 SCREW	
									77041	UNITY FASTENER	
									77042	M4 PHILIPS SCREW	
									85171	INSULATION	
									85215	SWITCH BRACKET	
									85222	BRACKET(L)	
									85223	BRACKET(R)	
									85314	TRANSFORMER	
									85327	F.C. JACK HARNESS	
									85333	SWITCH HARNESS	

From the library of: Diamond Needle Corp.

BUYER'S MODEL NO.	1500	SECTION		PAGE		REVISION		REMARKS		PART NO.	DESCRIPTION
BUYER'S MODEL NAME		—	12							1520	E3 CLIP-ON-WASHER
FACTORY MODEL	CA10060										8400
ORIGINAL ISSUE	September, 2000	SERIAL NO.								8466	WASHER
										35818	WASHER
										43392	WASHER
										63560	M4 PHILIPS SCREW
										85126	IDLAER PULLEY
										85130	MOTOR PULLEY
										85132	ENCODER
										85188	IDLAER PULLEY BRACKET
										85201	MOTOR BRACKET
										85257	RUBBER STOPPER
										85259	RUBBER CUSHION
										85263	M3 SCREW
										85302	MOTOR
										85318	FERITE RING
										85400	BELT (L)
										85401	BELT (S)

From the library of: Diamond Needle Co.

BUYER'S MODEL NO.	1500	SECTION	PAGE	REVISION	REMARKS	PART NO.	DESCRIPTION
BUYER'S MODEL NAME		—	13			1513	E4 CLIP-ON-WASHER
FACTORY MODEL	CA10060						39163
ORIGINAL ISSUE	September, 2000	SERIAL NO.				61222	M4 SCREW
<p>The diagram shows an exploded view of a clip-on washer assembly. The main body is a rectangular frame with a central panel. Various screws and washers are shown being inserted into the frame. A cord with a connector is shown attached to the side. A handle bracket is shown being attached to the bottom. A cord guard is shown being attached to the top. A main circuit board is shown being inserted into the bottom. A handle is shown being attached to the side. A pin is shown being inserted into the handle. A mission cord is shown being inserted into the handle. A main circuit board is shown being inserted into the bottom.</p>						61224	M4 SCREW
						67394	M5 SCREW
						77041	UNITY FASTENER
						77078	CORD GUARD
						85074	M3 SCREW
						85123	P.C.B. CONTAINER
						85125	HANDLE
						85195	HANDLE BRACKET
						85260	PIN
						85329	TRANS MISSION CORD
						85331	MAIN CIRCUIT BOARD
						85074	M3 SCREW
						39163	M3 SCREW
						61222	M4 SCREW
						61224	M4 SCREW
67394	M5 SCREW						
77041	UNITY FASTENER						
77078	CORD GUARD						
85074	M3 SCREW						
85123	P.C.B. CONTAINER						
85125	HANDLE						
85195	HANDLE BRACKET						
85260	PIN						
85329	TRANS MISSION CORD						
85331	MAIN CIRCUIT BOARD						

From the library of: Diamond Needle Co.

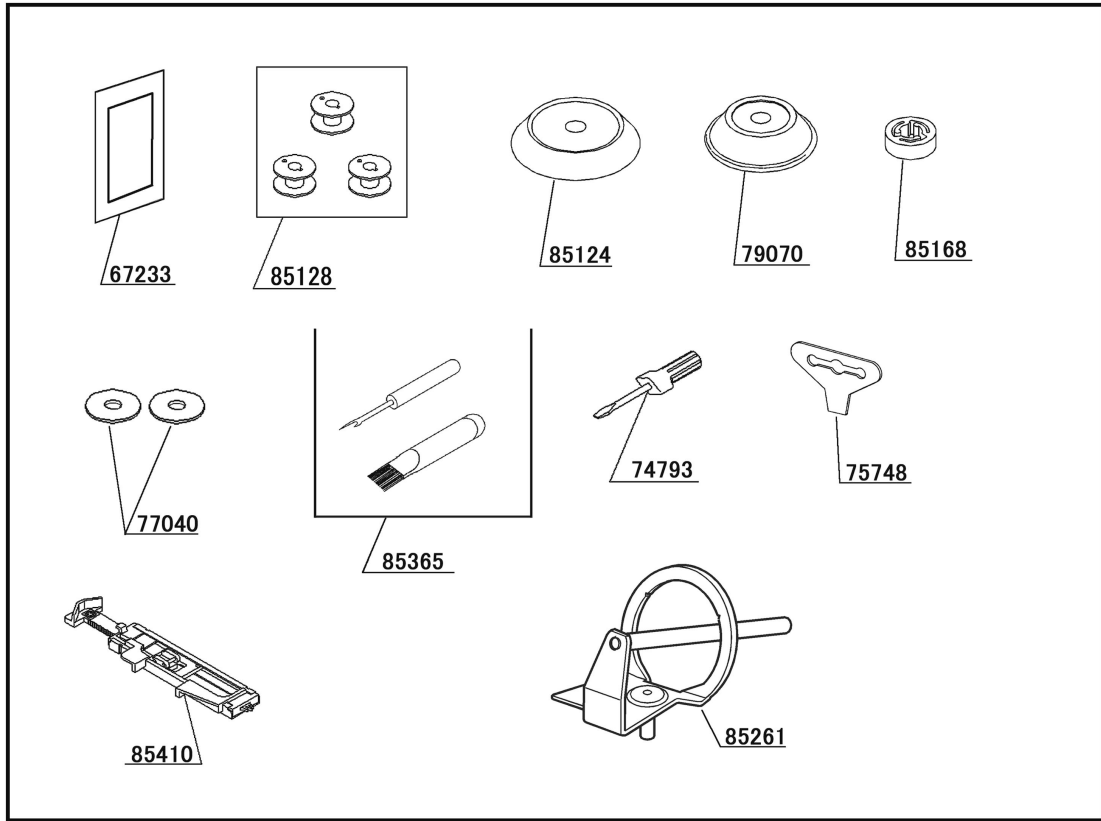
BUYER'S MODEL NO.	1500	SECTION		PAGE		REVISION		REMARKS		PART NO.	DESCRIPTION
BUYER'S MODEL NAME		—	14							4844	WASHER
FACTORY MODEL	CA10060										39816
ORIGINAL ISSUE	September, 2000	SERIAL NO.								44498	M3 NUT
										61225	M4 SCREW
										64083	SPOOL PIN
										68443	BLADE
										76448	DROP KNOB
										77042	M4 PHILIPS SCREW
										85074	M3 SCREW
										85106	FACE COVER PANEL
										85111	BOTTOM COVER
										85112	SIDE COVER
										85113	LID
85114	TOP COVER										
85115	INNER TOP COVER										
85159	SENSOR PROTECTOR										
85170	SPOOL PIN										
85230	THREAD GUIDE SET B										
85243	THREAD GUIDE A										
85246	GUIDE PLATE										
85265	M4 SCREW										
85420	SEAL										
85470	SEAL										
85482	FACE COVER										

From the library of Diaporo

BUYER'S MODEL NO.	1500	SECTION	PAGE	REVISION	REMARKS	PART NO.	DESCRIPTION
BUYER'S MODEL NAME		—	15	AUGUST ,2001		4844	WASHER
FACTORY MODEL	CA10060						39162
ORIGINAL ISSUE	September, 2000	SERIAL NO.				57746	TAPPING SCREW
						64360	TOOTHED WASHER
						64484	TAPPING SCREW
						64629	CORD GUIDE
						65826	M3 SCREW
						73363	WASHER
						74795	TAPPING SCREW
						76440	BOBBIN WINDER LATCH
						76511	SEAL
						77044	M3 SCREW
						85121	SPEED CONTROL KNOB
						85122	BUTTON A
						85145	SLIDE VOLUME ATTACHMENT
						85150	WASHER
						85160	LATCH
						85244	LEFT SPRING
						85284	BUTTON C
						85285	BUTTON B
						85321	SLIDE VOLUME UNIT
						85323	SWITCH CIRCUIT BOARD

From the library of: [Circuit Feeder](#)

BUYER'S MODEL NO.	1500	SECTION	PAGE	REVISION	REMARKS	PART NO.	DESCRIPTION
BUYER'S MODEL NAME		—	16			50980	ACCESSORY SET
FACTORY MODEL	CA10060						67233
ORIGINAL ISSUE	September, 2000	SERIAL NO.				74793	SMALL SCREW DRIVER
						74990	FOOT CONTROL
						75748	SCREW DRIVER
						77040	SPOOL PIN DISC
						79070	SPOOL PIN CAP
						85124	SPOOL PIN CAP
						85128	BOBBIN
						85168	SPOOL PIN CAP
						85261	SPOOL HOLDER
						85334	POWER CORD
						85365	BUTTONHOLE OPENER
						85410	BUTTONHOLE FOOT
						85435	F.C. BOX
						85681	BOOK(ENG.,SPA.)



50980

From the library of: Diamond Needle Co.

